

February 14, 2022

RESOLUTION 2022-01

A RESOLUTION OF THE CITY COUNCIL FOR THE CITY OF WESTLAKE, FLORIDA, APPROVING THE FINAL PLAT FOR CRESSWIND PALM BEACH PHASE 5, BEING A PORTION OF SECTIONS 6 AND 7, TOWNSHIP 43 SOUTH, RANGE 41 EAST, CITY OF WESTLAKE, PALM BEACH COUNTY, FLORIDA, PROVIDING FOR RECORDATION, PROVIDING FOR CONFLICTS; PROVIDING FOR SEVERABILITY; AND PROVIDING AN EFFECTIVE DATE.

WHEREAS, KH Westlake, LLC, a Florida Limited Liability Company, as the Owner has requested approval for the final plat for Cresswind Palm Beach Phase 5, being a portion of Sections 6 and 7, Township 43 South, Range 41 East, City of Westlake, Palm Beach County Florida, containing approximately 65.1492 acres as described in Exhibit "A", attached hereto; and

WHEREAS, the City of Westlake has the exclusive jurisdiction to approve the plat and boundary survey pursuant to Florida Statutes, §177.071; and

WHEREAS, the application has been reviewed and approved by a Professional Surveyor and Mapper for the City of Westlake, and said Surveyor and Mapper has found the application to be consistent with the requirements under Florida Statutes, Chapter 177; and

WHEREAS, the Building staff, Engineering staff and Planning staff for the City of Westlake have reviewed the application, the final plat, attached hereto as "Exhibit B", and the boundary survey, attached hereto as "Exhibit C", and the collective staff has recommended approval; and

WHEREAS, after careful review and consideration, the collective staff has determined that this application has complied with the City's Land Development Regulations and Florida law.

NOW THEREFORE, BE IT RESOLVED BY THE CITY COUNCIL FOR THE CITY OF WESTLAKE, FLORIDA, THAT:

- Section 1: **INCORPORATION.** The above recitals are true and correct and are incorporated herein by this reference.
- Section 2: **CITY COUNCIL APPROVALS.** The City Council for the City of Westlake hereby approves the final plat, "Exhibit B" and boundary survey, "Exhibit C" for the Cresswind Palm Beach Phase 5, as described in the attached Exhibit "A", containing approximately 65.1492 acres, which is located in the City of Westlake, and in Palm Beach County, Florida.
- Section 3: **RECORDATION.** The applicant shall provide a certified copy of the recorded plat and the applicant shall cover the costs of recording the plat in the public records in and for Palm Beach County Florida.

Section 4: **SCRIVENER'S ERRORS.** This Resolution can be renumbered or re-lettered and typographical errors and clarification of ambiguous wording that do not affect the intent can be corrected with the authorization of the City Manager and City Attorney without the need for public hearing.

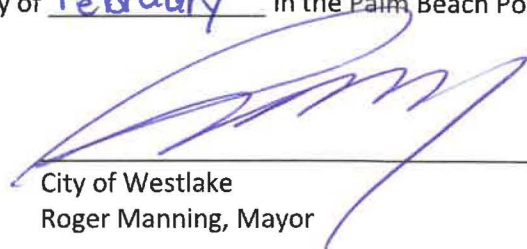
Section 5: **CONFLICTS:** All Resolutions or parts of Resolutions in conflict herewith, be and the same are repealed to the extent of such conflict.

Section 6: **SEVERABILITY:** If any clause, section, or other part of this Resolution shall be held by any court of competent jurisdiction to be unconstitutional or invalid, such unconstitutional or invalid part shall be considered eliminated and will in no way affect the validity of the other provisions of this Resolution.

Section 7: **EFFECTIVE DATE:** This resolution shall take effect immediately upon its adoption.

PASSED AND APPROVED by City Council for the City of Westlake, on this 14 day of February, 2022.


PUBLISHED on this 2nd day of February in the Palm Beach Post.



City of Westlake
Roger Manning, Mayor



Zoie Burgess, City Clerk



Approved as to Form and Sufficiency
Jacob H. Lewis, City Attorney
(PRINT NAME)

Exhibit 'A'
CRESSWIND PALM BEACH PHASE 5
LEGAL DESCRIPTION

THIS SPACE INTENTIONALLY LEFT BLANK

DESCRIPTION: Cresswind Palm Beach Phase 5

A PORTION OF SECTIONS 6 AND 7, TOWNSHIP 43 SOUTH, RANGE 41 EAST, CITY OF WESTLAKE, PALM BEACH COUNTY, FLORIDA, BEING MORE PARTICULARLY DESCRIBED AS FOLLOWS:

BEGINNING AT THE SOUTHEAST CORNER OF TRACT O.S.T. 1, CRESSWIND PALM BEACH PHASE 3, ACCORDING TO THE PLAT THEREOF, AS RECORDED IN PLAT BOOK 132, PAGES 120 THROUGH 126 OF THE PUBLIC RECORDS OF PALM BEACH COUNTY, FLORIDA, SAID POINT BEING ON THE NORTH BOUNDARY LINE OF PERSIMMON BOULEVARD EAST - PLAT 3, AND THE EASTERLY EXTENSION THEREOF, AS RECORDED IN ROAD PLAT BOOK 12, PAGES 158 THROUGH 160 OF SAID PUBLIC RECORDS, THENCE ALONG SAID NORTH BOUNDARY LINE, THE FOLLOWING FIVE (5) COURSES AND DISTANCES: S75°14'29"E, A DISTANCE OF 103.22 FEET TO THE POINT OF CURVE TO THE LEFT, A RADIAL DISTANCE OF 1,399.00 FEET; THENCE EASTERLY ALONG THE ARC, THROUGH A CENTRAL ANGLE OF 07°22'38", A DISTANCE OF 180.13 FEET TO A POINT OF NON-TANGENCY; THENCE S70°59'35"E, A DISTANCE OF 50.31 FEET TO THE POINT OF CURVE OF A NON TANGENT CURVE TO THE LEFT, OF WHICH THE RADIUS POINT LIES N05°22'42"E, A RADIAL DISTANCE OF 1,410.00 FEET; THENCE EASTERLY ALONG THE ARC, THROUGH A CENTRAL ANGLE OF 12°46'29", A DISTANCE OF 314.38 FEET; THENCE N82°36'13"E, A DISTANCE OF 1,459.69 FEET TO THE POINT OF CURVE TO THE RIGHT, A RADIAL DISTANCE OF 2,190.00 FEET; THENCE EASTERLY ALONG THE ARC, THROUGH A CENTRAL ANGLE OF 03°01'44", A DISTANCE OF 115.77 FEET TO A POINT OF NON-TANGENCY; THENCE N14°48'47"W, A DISTANCE OF 64.89 FEET TO THE POINT OF CURVE OF A NON TANGENT CURVE TO THE LEFT, OF WHICH THE RADIUS POINT LIES N31°05'49"W, A RADIAL DISTANCE OF 518.00 FEET; THENCE NORTHERLY ALONG THE ARC, THROUGH A CENTRAL ANGLE OF 76°07'29", A DISTANCE OF 688.23 FEET; THENCE N17°13'19"W, A DISTANCE OF 276.23 FEET TO THE POINT OF CURVE TO THE RIGHT, A RADIAL DISTANCE OF 592.00 FEET; THENCE NORTHERLY ALONG THE ARC, THROUGH A CENTRAL ANGLE OF 18°14'47", A DISTANCE OF 188.53 FEET TO A POINT OF NON-TANGENCY; THENCE N02°57'09"E, A DISTANCE OF 203.52 FEET TO THE POINT BEING ON THE SOUTH BOUNDARY LINE OF CRESSWIND PALM BEACH PHASE 4, AS RECORDED IN PLAT BOOK ___, PAGES ___ THROUGH ___ OF SAID PUBLIC RECORDS, THENCE ALONG SAID SOUTH BOUNDARY LINE, THE FOLLOWING FOURTEEN (14) COURSES AND DISTANCES: N87°02'51"W, A DISTANCE OF 138.00 FEET; THENCE N72°52'20"W, A DISTANCE OF 57.76 FEET; THENCE N87°02'51"W, A DISTANCE OF 130.00 FEET; THENCE N87°47'15"W, A DISTANCE OF 30.08 FEET; THENCE N86°46'06"W, A DISTANCE OF 120.00 FEET TO THE POINT OF CURVE OF A NON TANGENT CURVE TO THE LEFT, OF WHICH THE RADIUS POINT LIES N86°46'06"W, A RADIAL DISTANCE OF 670.00 FEET; THENCE NORTHERLY ALONG THE ARC, THROUGH A CENTRAL ANGLE OF 00°12'10", A DISTANCE OF 2.37 FEET; THENCE N03°01'44"E, A DISTANCE OF 55.78 FEET; THENCE N86°58'16"W, A DISTANCE OF 186.00 FEET; THENCE N03°01'44"E, A DISTANCE OF 25.02 FEET; THENCE N86°58'16"W, A DISTANCE OF 240.52 FEET; THENCE S09°58'31"W, A DISTANCE OF 70.38 FEET; THENCE N80°01'29"W, A DISTANCE OF 130.00 FEET; THENCE N69°30'20"W, A DISTANCE OF 57.03 FEET; THENCE N80°47'51"W, A DISTANCE OF 130.00 FEET TO A POINT ON THE EAST BOUNDARY LINE OF CRESSWIND PALM BEACH PHASE 2, AS RECORDED IN PLAT BOOK 130, PAGES 199 THROUGH 205 OF SAID PUBLIC RECORDS, THENCE ALONG SAID EAST BOUNDARY LINE, THE FOLLOWING TWO (2) COURSES AND DISTANCES: SAID POINT BEING ON THE CURVE OF A NON TANGENT CURVE TO THE RIGHT, OF WHICH THE RADIUS POINT LIES N80°47'51"W, A RADIAL DISTANCE OF 642.00 FEET; THENCE SOUTHERLY ALONG THE ARC, THROUGH A CENTRAL ANGLE OF 01°00'23", A DISTANCE OF 11.28 FEET TO A POINT OF NON-TANGENCY; THENCE S89°16'47"W, A DISTANCE OF 20.38 FEET TO THE POINT BEING ON THE EAST BOUNDARY LINE OF SAID CRESSWIND PALM BEACH PHASE 4; THENCE ALONG SAID EAST BOUNDARY LINE, THE FOLLOWING TWO (2) COURSES AND DISTANCES: SAID POINT BEING ON THE CURVE OF A NON TANGENT CURVE TO THE RIGHT, OF WHICH THE RADIUS POINT LIES N79°26'07"W, A RADIAL DISTANCE OF 622.00 FEET; THENCE SOUTHERLY ALONG THE ARC, THROUGH A CENTRAL ANGLE OF 05°42'54", A DISTANCE OF 62.04 FEET; THENCE S16°16'48"W, A DISTANCE OF 421.43 FEET TO THE POINT BEING ON THE SOUTH BOUNDARY LINE OF SAID PLAT; THENCE ALONG SAID SOUTH BOUNDARY LINE, THE FOLLOWING THREE (3) COURSES AND DISTANCES: N73°43'12"W, A DISTANCE OF 130.00 FEET; THENCE N68°52'46"W, A DISTANCE OF 56.20 FEET; THENCE N73°43'12"W, A DISTANCE OF 130.00 FEET TO THE POINT BEING ON THE EAST BOUNDARY LINE OF CRESSWIND PALM BEACH PHASE 3, AS RECORDED IN PLAT BOOK 132, PAGES 120 THROUGH 126 OF SAID PUBLIC RECORDS, THENCE ALONG SAID EAST BOUNDARY LINE, THE FOLLOWING SIXTEEN (16) COURSES AND DISTANCES: SAID POINT BEING ON THE CURVE OF A NON TANGENT CURVE TO THE LEFT, OF WHICH THE RADIUS POINT LIES S73°24'03"E, A RADIAL DISTANCE OF 1,295.47 FEET; THENCE SOUTHERLY ALONG THE ARC, THROUGH A CENTRAL ANGLE OF 13°06'43", A DISTANCE OF 296.46 FEET; THENCE S10°53'13"W, A DISTANCE OF 56.01 FEET; THENCE S57°18'31"W, A

DISTANCE OF 35.62 FEET; THENCE N78°06'51"W, A DISTANCE OF 56.00 FEET; THENCE N33°06'51"W, A DISTANCE OF 35.36 FEET; THENCE N78°06'51"W, A DISTANCE OF 24.70 FEET TO THE POINT OF CURVE TO THE LEFT, A RADIAL DISTANCE OF 1,172.00 FEET; THENCE WESTERLY ALONG THE ARC, THROUGH A CENTRAL ANGLE OF 03°55'43", A DISTANCE OF 80.36 FEET TO A POINT OF NON-TANGENCY; THENCE S11°53'09"W, A DISTANCE OF 199.93 FEET TO THE POINT OF CURVE TO THE RIGHT, A RADIAL DISTANCE OF 742.00 FEET; THENCE SOUTHWESTERLY ALONG THE ARC, THROUGH A CENTRAL ANGLE OF 22°44'41", A DISTANCE OF 294.55 FEET; THENCE S34°37'50"W, A DISTANCE OF 49.53 FEET TO THE POINT OF CURVE OF A NON TANGENT CURVE TO THE LEFT, OF WHICH THE RADIUS POINT LIES S25°04'33"W, A RADIAL DISTANCE OF 458.00 FEET; THENCE WESTERLY ALONG THE ARC, THROUGH A CENTRAL ANGLE OF 09°51'49", A DISTANCE OF 78.85 FEET; THENCE N74°47'16"W, A DISTANCE OF 56.57 FEET; THENCE S15°12'44"W, A DISTANCE OF 130.00 FEET; THENCE S74°47'16"E, A DISTANCE OF 50.00 FEET; THENCE S06°43'42"W, A DISTANCE OF 56.63 FEET; THENCE S15°35'19"W, A DISTANCE OF 241.18 FEET TO THE POINT OF BEGINNING.

CONTAINING 2,837,901 SQUARE FEET/65.1492 ACRES, MORE OR LESS.

Exhibit 'B'
CRESSWIND PALM BEACH PHASE 5
PLAT

THIS PAGE WAS LEFT BLANK ON PURPOSE

CRESSWIND PALM BEACH PHASE 5

A PORTION OF SECTIONS 6 AND 7, TOWNSHIP 43 SOUTH, RANGE 41 EAST,
CITY OF WESTLAKE, PALM BEACH COUNTY, FLORIDA.

THIS INSTRUMENT PREPARED BY
DAVID P. LINDLEY
OF
CAULFIELD & WHEELER, INC.
SURVEYORS - ENGINEERS - PLANNERS
7900 GLADES ROAD, SUITE 100
BOCA RATON, FLORIDA 33434 - (561)392-1991
CERTIFICATE OF AUTHORIZATION NO. LB3591

SHEET 2 OF 7

MORTGAGEE'S JOINDER AND CONSENT:

STATE OF _____)
COUNTY OF _____)

THE UNDERSIGNED HEREBY CERTIFIES THAT IT IS THE HOLDER OF A MORTGAGE, UPON THE PROPERTY DESCRIBED HEREON AND DOES HEREBY JOIN IN AND CONSENT TO THE DEDICATION OF THE LAND DESCRIBED IN SAID DEDICATION BY THE OWNER THEREOF AND AGREES THAT ITS MORTGAGE WHICH IS RECORDED IN OFFICIAL RECORDS BOOK _____, AT PAGE _____ OF THE PUBLIC RECORDS OF PALM BEACH COUNTY, FLORIDA, SHALL BE SUBORDINATED TO THE DEDICATION SHOWN HEREON.

IN WITNESS WHEREOF, THE SAID COMPANY HAS CAUSED THESE PRESENTS TO BE SIGNED BY ITS SENIOR VICE PRESIDENT THIS _____ DAY OF _____, 202__.

U.S. BANK NATIONAL ASSOCIATION
D/B/A HOUSING CAPITAL COMPANY

WITNESS: _____
PRINT NAME _____
WITNESS: _____
PRINT NAME _____

BY: _____
THOMAS G. WALKER
SENIOR VICE PRESIDENT

ACKNOWLEDGEMENT:

STATE OF _____)
COUNTY OF _____)

THE FOREGOING INSTRUMENT WAS ACKNOWLEDGED BEFORE ME BY MEANS OF [] PHYSICAL PRESENCE OR [] ONLINE NOTARIZATION, THIS _____ DAY OF _____, 202__ BY THOMAS G. WALKER AS SENIOR VICE PRESIDENT OF U.S. BANK NATIONAL ASSOCIATION, D/B/A HOUSING CAPITAL COMPANY, ON BEHALF OF THE COMPANY, WHO IS [] PERSONALLY KNOWN TO ME OR HAS PRODUCED _____ AS IDENTIFICATION.

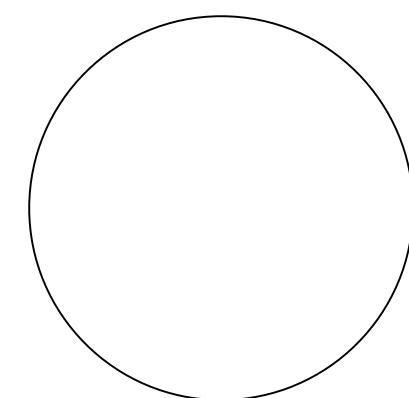
WITNESS MY HAND AND OFFICIAL SEAL THIS _____ DAY OF _____, 202__.

(SEAL)

NOTARY PUBLIC

PRINT NAME
MY COMMISSION EXPIRES: _____
COMMISSION NUMBER: _____

U.S. BANK NATIONAL ASSOCIATION



ACCEPTANCE OF DEDICATION:

STATE OF FLORIDA)
COUNTY OF PALM BEACH)

CRESSWIND PALM BEACH HOMEOWNERS ASSOCIATION, INC., A FLORIDA CORPORATION NOT FOR PROFIT, HEREBY ACCEPTS THE DEDICATIONS OR RESERVATIONS TO SAID ASSOCIATION AS STATED AND SHOWN HEREON, AND HEREBY ACCEPTS ITS MAINTENANCE OBLIGATIONS FOR SAME AS STATED HEREON, DATED THIS _____ DAY OF _____, 202__.

CRESSWIND PALM BEACH HOMEOWNERS ASSOCIATION, INC.
A FLORIDA CORPORATION NOT FOR PROFIT

WITNESS: _____
PRINT NAME _____
WITNESS: _____
PRINT NAME _____

BY: _____
VICTORIA IMOFF
PRESIDENT

ACKNOWLEDGEMENT:

STATE OF FLORIDA)
COUNTY OF PALM BEACH)

THE FOREGOING INSTRUMENT WAS ACKNOWLEDGED BEFORE ME BY MEANS OF [] PHYSICAL PRESENCE OR [] ONLINE NOTARIZATION, THIS _____ DAY OF _____, 202__ BY VICTORIA IMOFF AS PRESIDENT OF CRESSWIND PALM BEACH HOMEOWNERS ASSOCIATION, INC., A FLORIDA CORPORATION NOT FOR PROFIT, WHO IS [] PERSONALLY KNOWN TO ME OR HAS PRODUCED _____ AS IDENTIFICATION.

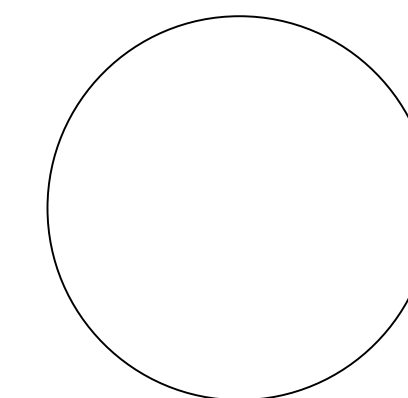
WITNESS MY HAND AND OFFICIAL SEAL THIS _____ DAY OF _____, 202__.

(SEAL)

NOTARY PUBLIC

PRINT NAME
MY COMMISSION EXPIRES: _____
COMMISSION NUMBER: _____

HOMEOWNERS
ASSOCIATION

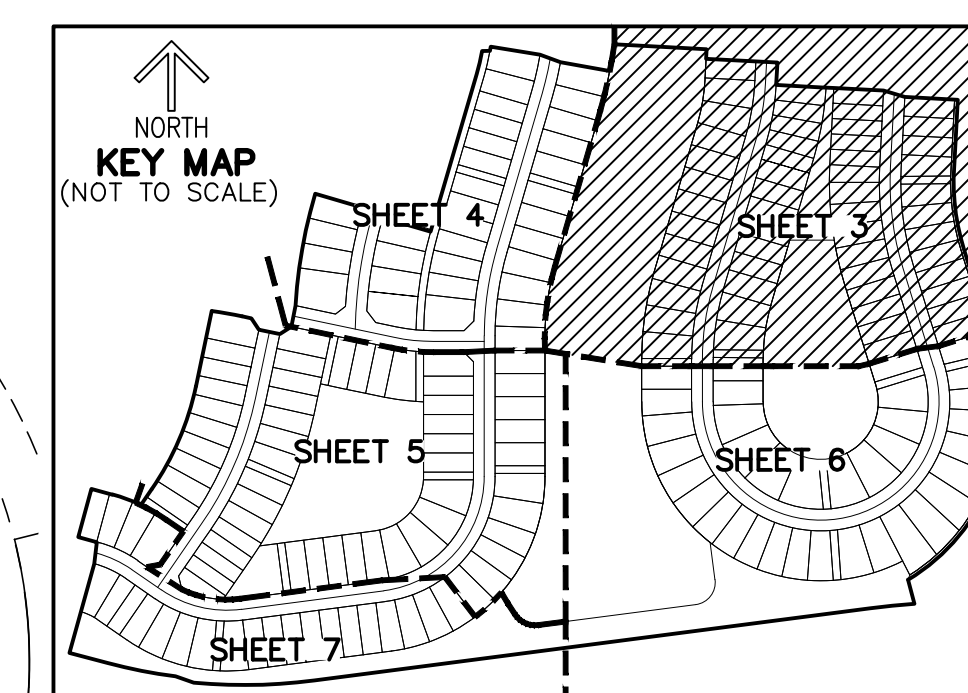
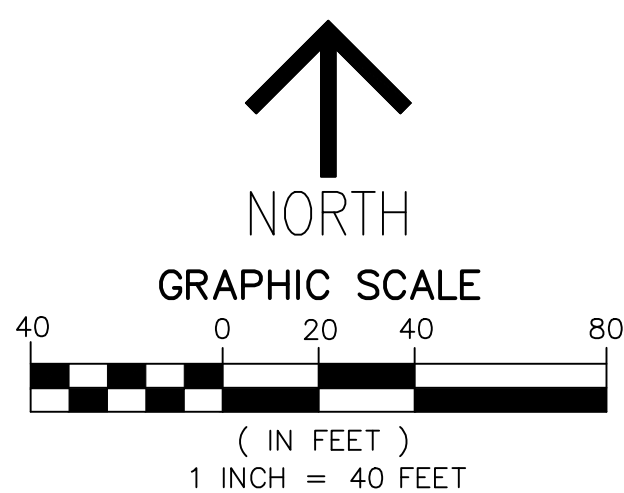


CRESSWIND PALM BEACH PHASE 5

A PORTION OF SECTIONS 6 AND 7, TOWNSHIP 43 SOUTH, RANGE 41 EAST,
CITY OF WESTLAKE, PALM BEACH COUNTY, FLORIDA.

THIS INSTRUMENT PREPARED BY
DAVID P. LINDLEY
OF
CAULFIELD & WHEELER, INC.
SURVEYORS - ENGINEERS - PLANNERS
7900 GLADES ROAD, SUITE 100
BOCA RATON, FLORIDA 33434 - (561)392-1991
CERTIFICATE OF AUTHORIZATION NO. LB3591

NOTES
COORDINATES, BEARINGS AND DISTANCES
COORDINATES SHOWN ARE GRID
DATUM = NAD 83 (2007 ADJUSTMENT)
ZONE = FLORIDA EAST
LINEAR UNIT = US SURVEY FEET
COORDINATE SYSTEM 1983 STATE PLANE
TRANSVERSE MERCATOR PROJECTION
ALL DISTANCES ARE GROUND
SCALE FACTOR = 1.0000017
GROUND DISTANCE X SCALE FACTOR = GRID DISTANCE
BEARINGS AS SHOWN HEREON ARE GRID DATUM,
NAD 83 (2007 ADJUSTMENT), FLORIDA EAST ZONE.



SHEET 3 OF 7

LEGEND/ABBREVIATIONS

- C/L - CENTERLINE
- CB - CHORD BEARING
- CD - CHORD DISTANCE
- DE - DRAINAGE EASEMENT
- E - EASING
- N - NORTHING (WHEN USED WITH COORDINATES)
- N' - NORTHING (WHEN USED WITH COORDINATES)
- L - ARC LENGTH
- LMAE - LAKE MAINTENANCE ACCESS EASEMENT
- LAE - LIMITED ACCESS EASEMENT
- LB - LICENSED BUSINESS
- RL - RADIAL LINE
- O.S.T./OST - OPEN SPACE TRACT
- PC - POINT OF CURVATURE
- PT - POINT OF TANGENCY
- PNT - POINT OF NON-TANGENCY
- PRC - POINT OF REVERSE CURVATURE
- R - RADIUS
- RPE - RURAL PARKWAY EASEMENT
- UE - UTILITY EASEMENT
- P.B. - PLAT BOOK
- R.P.B. - ROAD PLAT BOOK
- PG./PGS. - PAGE/PAGES
- 6-43-41 - SECTION 6, TOWNSHIP 43 SOUTH, RANGE 41 EAST
- NAD - NORTH AMERICAN DATUM
- - SET PERMANENT CONTROL POINT NAIL AND DISK STAMPED "C&W LB 3591"
- - SET PERMANENT REFERENCE MONUMENT SET 5/8" IRON ROD WITH CAP STAMPED "C&W LB 3591"
- - FOUND PERMANENT REFERENCE MONUMENT 4" x 4" x 24" CONCRETE MONUMENT WITH DISK STAMPED "PRM LB 3591"

UNPLATTED
A PORTION OF SECTION 6
TOWNSHIP 43 SOUTH, RANGE 41 EAST

UNPLATTED
A PORTION OF SECTION 6
TOWNSHIP 43 SOUTH, RANGE 41 EAST

MATCH LINE SHEET 4

MATCH LINE SHEET 6

MATCH LINE SHEET 6

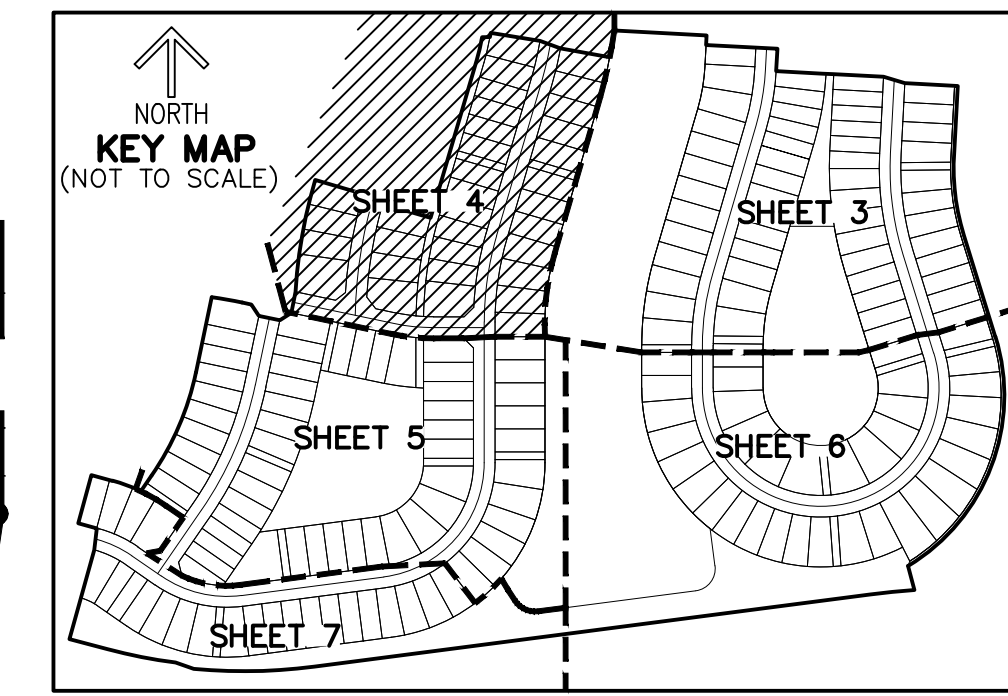
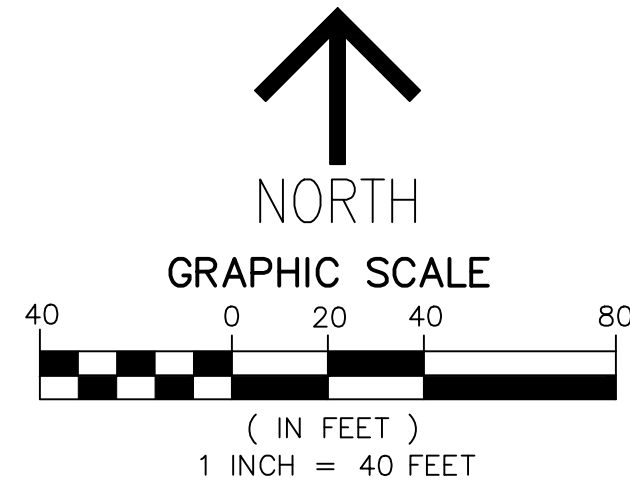
MATCH LINE SHEET 6



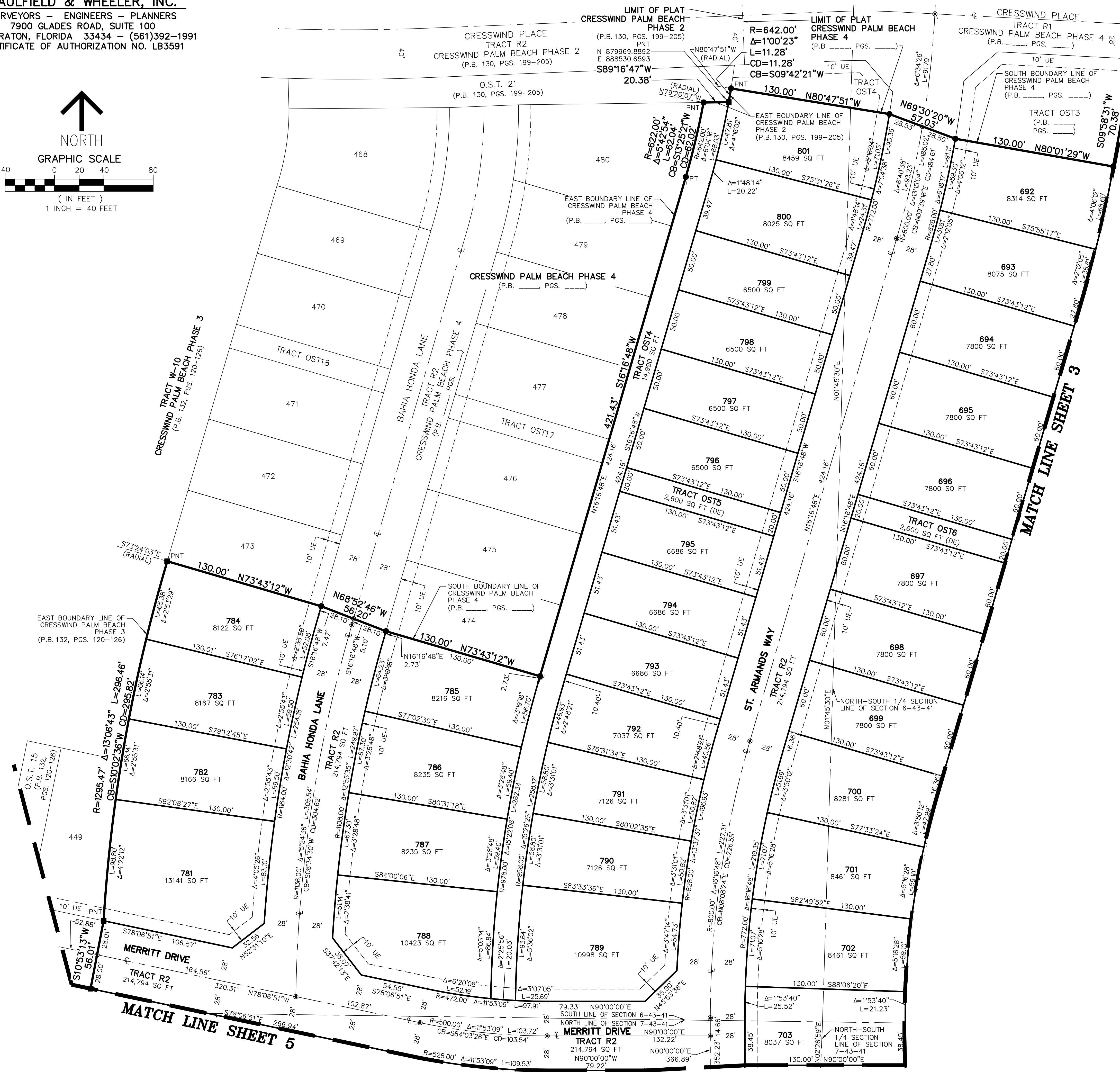
CRESSWIND PALM BEACH PHASE 5

A PORTION OF SECTIONS 6 AND 7, TOWNSHIP 43 SOUTH, RANGE 41 EAST,
CITY OF WESTLAKE, PALM BEACH COUNTY, FLORIDA.

THIS INSTRUMENT PREPARED BY
DAVID P. LINDLEY
OF
CAULFIELD & WHEELER, INC.
SURVEYORS - ENGINEERS - PLANNERS
7900 GLADES ROAD, SUITE 100
BOCA RATON, FLORIDA 33434 - (561)392-1991
CERTIFICATE OF AUTHORIZATION NO. LB3591



SHEET 4 OF 7



- LEGEND/ABBREVIATIONS**
- C - CENTERLINE
 - Δ - DELTA (CENTRAL ANGLE)
 - CB - CHORD BEARING
 - CD - CHORD DISTANCE
 - DE - DRAINAGE EASEMENT
 - E - EASTING
 - N - NORTHING
 - L - ARC LENGTH
 - LM/AE - LAKE MAINTENANCE ACCESS EASEMENT
 - LAE - LIMITED ACCESS EASEMENT
 - LB - LICENSED BUSINESS
 - (R) - RADIAL LINE
 - O.S.T./OST - OPEN SPACE TRACT
 - PC - POINT OF CURVATURE
 - PT - POINT OF TANGENCY
 - PNT - POINT OF NON-TANGENCY
 - PRC - POINT OF REVERSE CURVATURE
 - R - RADIUS
 - RPE - RURAL PARKWAY EASEMENT
 - UE - UTILITY EASEMENT
 - P.B. - PLAT BOOK
 - R.P.B. - ROAD PLAT BOOK
 - PG./PGS. - PAGE/PAGES
 - 6-43-41 - SECTION 6, TOWNSHIP 43 SOUTH, RANGE 41 EAST
 - NAD - NORTH AMERICAN DATUM
 - - SET PERMANENT CONTROL POINT NAIL AND DISK STAMPED "C&W LB 3591"
 - - SET PERMANENT REFERENCE MONUMENT SET 5/8" IRON ROD WITH CAP STAMPED "C&W LB 3591"
 - - FOUND PERMANENT REFERENCE MONUMENT 4" X 4" X 24" CONCRETE MONUMENT WITH DISK STAMPED "PRM LB 3591"

NOTES
COORDINATES, BEARINGS AND DISTANCES

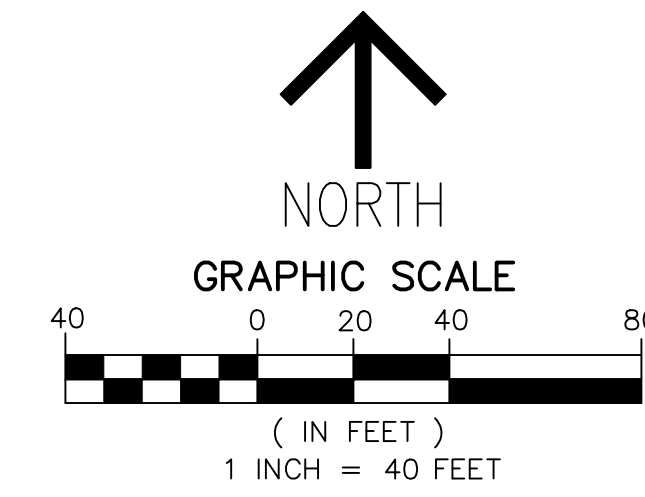
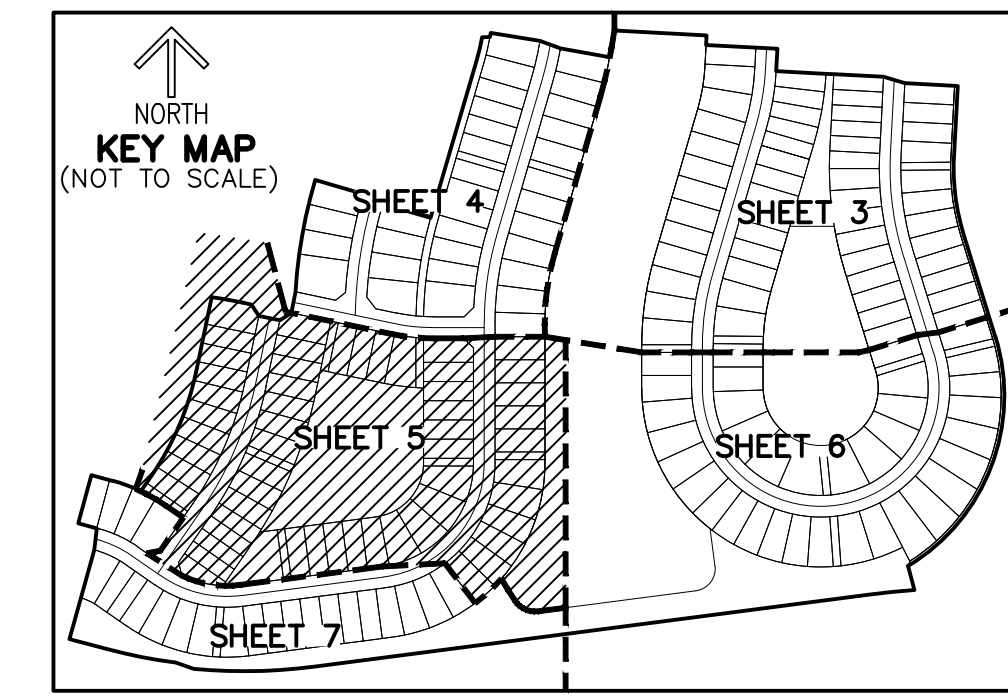
COORDINATES SHOWN ARE GRID
DATUM = NAD 83 (2007 ADJUSTMENT)
ZONE = FLORIDA EAST
LINEAR UNIT = US SURVEY FEET
COORDINATE SYSTEM 1983 STATE PLANE
TRANSVERSE MERCATOR PROJECTION
ALL DISTANCES ARE GROUND
SCALE FACTOR = 1.0000017
GROUND DISTANCE X SCALE FACTOR = GRID DISTANCE
BEARINGS AS SHOWN HEREON ARE GRID DATUM,
NAD 83 (2007 ADJUSTMENT), FLORIDA EAST ZONE.

CRESSWIND PALM BEACH PHASE 5

A PORTION OF SECTIONS 6 AND 7, TOWNSHIP 43 SOUTH, RANGE 41 EAST,
CITY OF WESTLAKE, PALM BEACH COUNTY, FLORIDA.

THIS INSTRUMENT PREPARED BY
DAVID P. LINDLEY

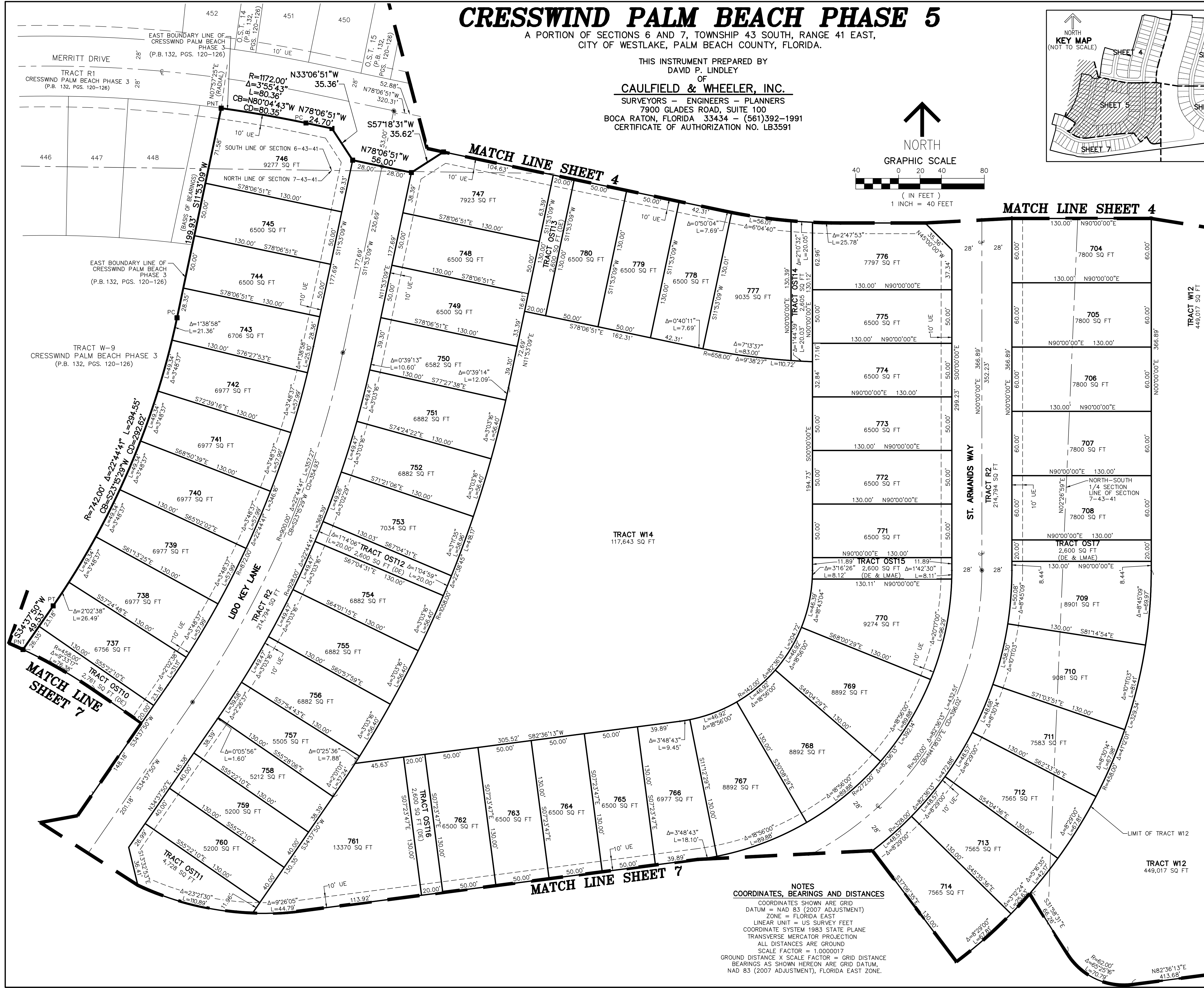
OF
CAULFIELD & WHEELER, INC.
SURVEYORS - ENGINEERS - PLANNERS
7900 GLADES ROAD, SUITE 100
BOCA RATON, FLORIDA 33434 - (561)392-1991
CERTIFICATE OF AUTHORIZATION NO. LB3591



SHEET 5 OF 7

LEGEND/ABBREVIATIONS

- C - CENTERLINE
- Δ - DELTA (CENTRAL ANGLE)
- CB - CHORD BEARING
- CD - CHORD DISTANCE
- DE - DRAINAGE EASEMENT
- F - EASTING (WHEN USED WITH COORDINATES)
- N - NORTHING (WHEN USED WITH COORDINATES)
- L - ARC LENGTH
- LMAE - LAKE MAINTENANCE ACCESS EASEMENT
- LAE - LIMITED ACCESS EASEMENT
- LB - LICENSED BUSINESS
- (R) - RADIAL LINE
- O.S.T./OST - OPEN SPACE TRACT
- PC - POINT OF CURVATURE
- PT - POINT OF TANGENCY
- PNT - POINT OF NON-TANGENCY
- PRC - POINT OF REVERSE CURVATURE
- R - RADIUS
- RPE - RURAL PARKWAY EASEMENT
- UE - UTILITY EASEMENT
- P.B. - PLAT BOOK
- R.P.B. - ROAD PLAT BOOK
- PG./PGS. - PAGE/PAGES
- 6-43-41 - SECTION 6, TOWNSHIP 43 SOUTH, RANGE 41 EAST
- NAD - NORTH AMERICAN DATUM
- - SET PERMANENT CONTROL POINT NAIL AND DISK STAMPED "C&W LB 3591"
- - SET PERMANENT REFERENCE MONUMENT
- - FOUND PERMANENT REFERENCE MONUMENT 4" X 4" X 24" CONCRETE MONUMENT WITH DISK STAMPED "PRM LB 3591"

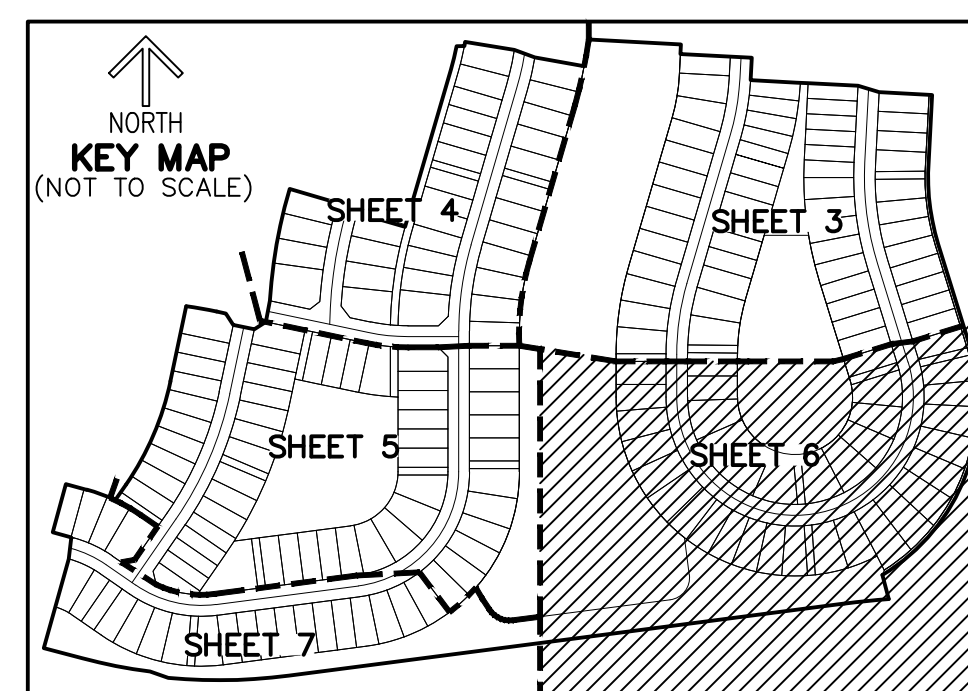
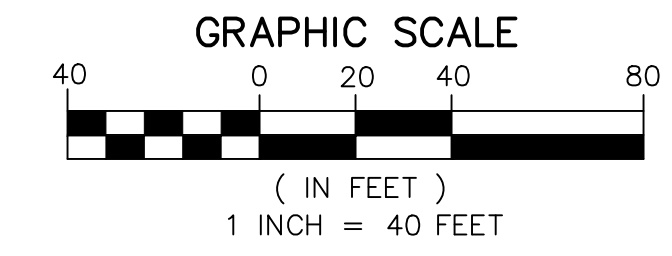
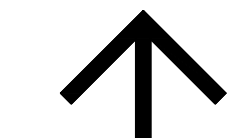


NOTES
COORDINATES, BEARINGS AND DISTANCES
COORDINATES SHOWN ARE GRID
DATUM = NAD 83 (2007 ADJUSTMENT)
ZONE = FLORIDA EAST
LINEAR UNIT = US SURVEY FEET
COORDINATE SYSTEM 1983 STATE PLANE
TRANSVERSE MERCATOR PROJECTION
ALL DISTANCES ARE GROUND
SCALE FACTOR = 1.0000017
GROUND DISTANCE X SCALE FACTOR = GRID DISTANCE
BEARINGS AS SHOWN HEREON ARE GRID DATUM,
NAD 83 (2007 ADJUSTMENT), FLORIDA EAST ZONE.

CRESSWIND PALM BEACH PHASE 5

A PORTION OF SECTIONS 6 AND 7, TOWNSHIP 43 SOUTH, RANGE 41 EAST,
CITY OF WESTLAKE, PALM BEACH COUNTY, FLORIDA.

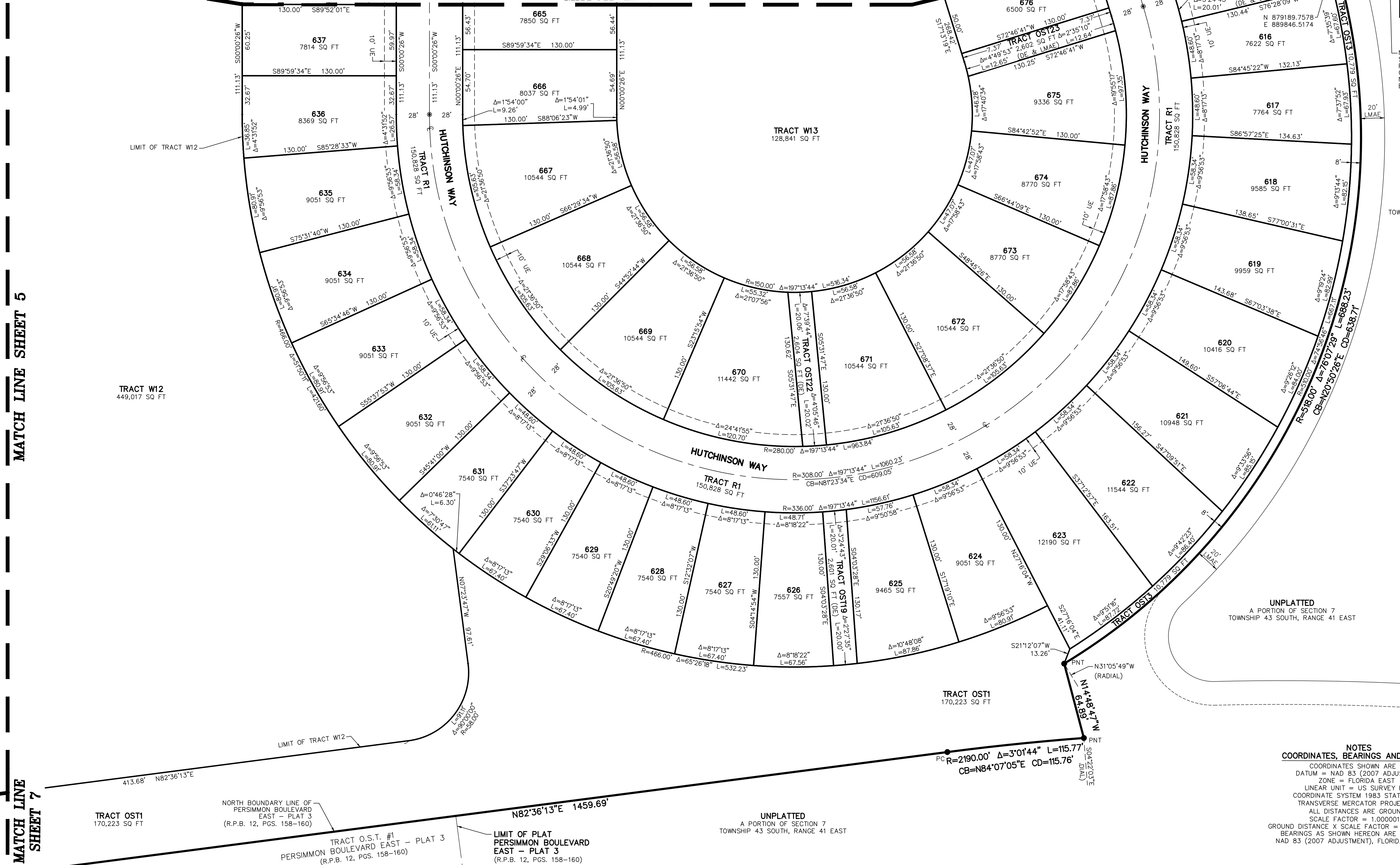
THIS INSTRUMENT PREPARED BY
DAVID P. LINDLEY
OF
CAULFIELD & WHEELER, INC.
SURVEYORS - ENGINEERS - PLANNERS
7900 GLADES ROAD, SUITE 100
BOCA RATON, FLORIDA 33434 - (561)392-1991
CERTIFICATE OF AUTHORIZATION NO. LB3591



LEGEND / ABBREVIATIONS

- | | |
|---|---|
| CL - CENTERLINE | 6-43-41 - SECTION 6, TOWNSHIP 43 SOUTH, RANGE 41 EAST |
| Δ - DELTA (CENTRAL ANGLE) | P.B. - PLAT BOOK |
| CB - CHORD BEARING | R.P.B. - ROAD PLAT BOOK |
| CD - CHORD DISTANCE | PG./PGS. - PAGE/PAGES |
| DE - DRAINAGE EASEMENT | NAD - NORTH AMERICAN DATUM |
| E - EASTING | ● - SET PERMANENT CONTROL POINT NAIL AND DISK STAMPED "C&W LB 3591" |
| (WHEN USED WITH COORDINATES) | ● - SET PERMANENT REFERENCE MONUMENT |
| N - NORTHING | ● - SET 5/8" IRON ROD WITH CAP STAMPED "C&W LB 3591" |
| (WHEN USED WITH COORDINATES) | ■ - SET PERMANENT REFERENCE MONUMENT |
| L - ARC LENGTH | 4" x 4" x 24" CONCRETE MONUMENT WITH DISK STAMPED "PRM LB 3591" |
| LMAE - LAKE MAINTENANCE ACCESS EASEMENT | |
| LAE - LIMITED ACCESS EASEMENT | |
| LB - LICENSED BUSINESS | |
| (R) - RADIAL LINE | |
| O.S.T./OST - OPEN SPACE TRACT | |
| PC - POINT OF CURVATURE | |
| PT - POINT OF TANGENCY | |
| PNT - POINT OF NON-TANGENCY | |
| PRC - POINT OF REVERSE CURVATURE | |
| R - RADIUS | |
| RPE - RURAL PARKWAY EASEMENT | |
| UE - UTILITY EASEMENT | |

MATCH LINE SHEET 3



MATCH LINE SHEET 5

MATCH LINE SHEET 7

MATCH LINE SHEET 3

SHEET 6 OF 7

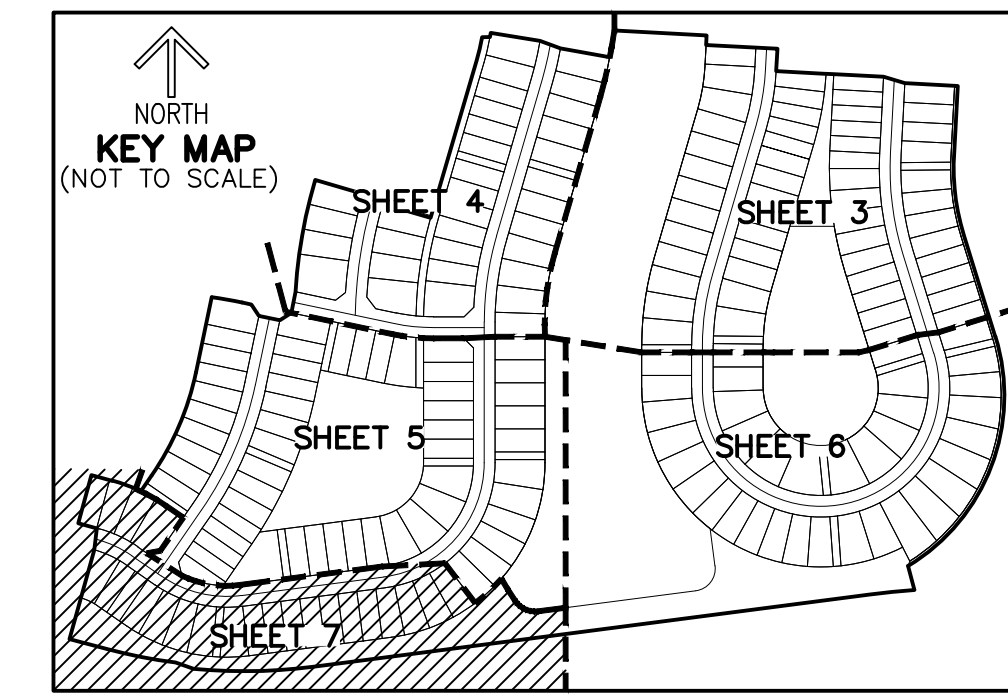
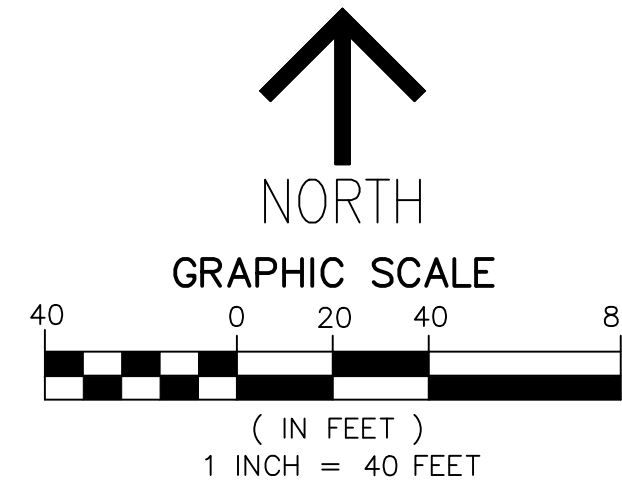
NOTES
COORDINATES, BEARINGS AND DISTANCES
COORDINATES SHOWN ARE GRID
DATUM = NAD 83 (2007 ADJUSTMENT)
ZONE = FLORIDA EAST
LINEAR UNIT = US SURVEY FEET
COORDINATE SYSTEM 1983 STATE PLANE
TRANSVERSE MERCATOR PROJECTION
ALL DISTANCES ARE GROUND
SCALE FACTOR = 1.0000017
GROUND DISTANCE X SCALE FACTOR = GRID DISTANCE
BEARINGS AS SHOWN HEREON ARE GRID DATUM,
NAD 83 (2007 ADJUSTMENT), FLORIDA EAST ZONE.

CRESSWIND PALM BEACH PHASE 5

A PORTION OF SECTIONS 6 AND 7, TOWNSHIP 43 SOUTH, RANGE 41 EAST,
CITY OF WESTLAKE, PALM BEACH COUNTY, FLORIDA.

THIS INSTRUMENT PREPARED BY
DAVID P. LINDLEY

OF
CAULFIELD & WHEELER, INC.
SURVEYORS - ENGINEERS - PLANNERS
7900 GLADES ROAD, SUITE 100
BOCA RATON, FLORIDA 33434 - (561)392-1991
CERTIFICATE OF AUTHORIZATION NO. LB3591



SHEET 7 OF 7

LEGEND/ABBREVIATIONS

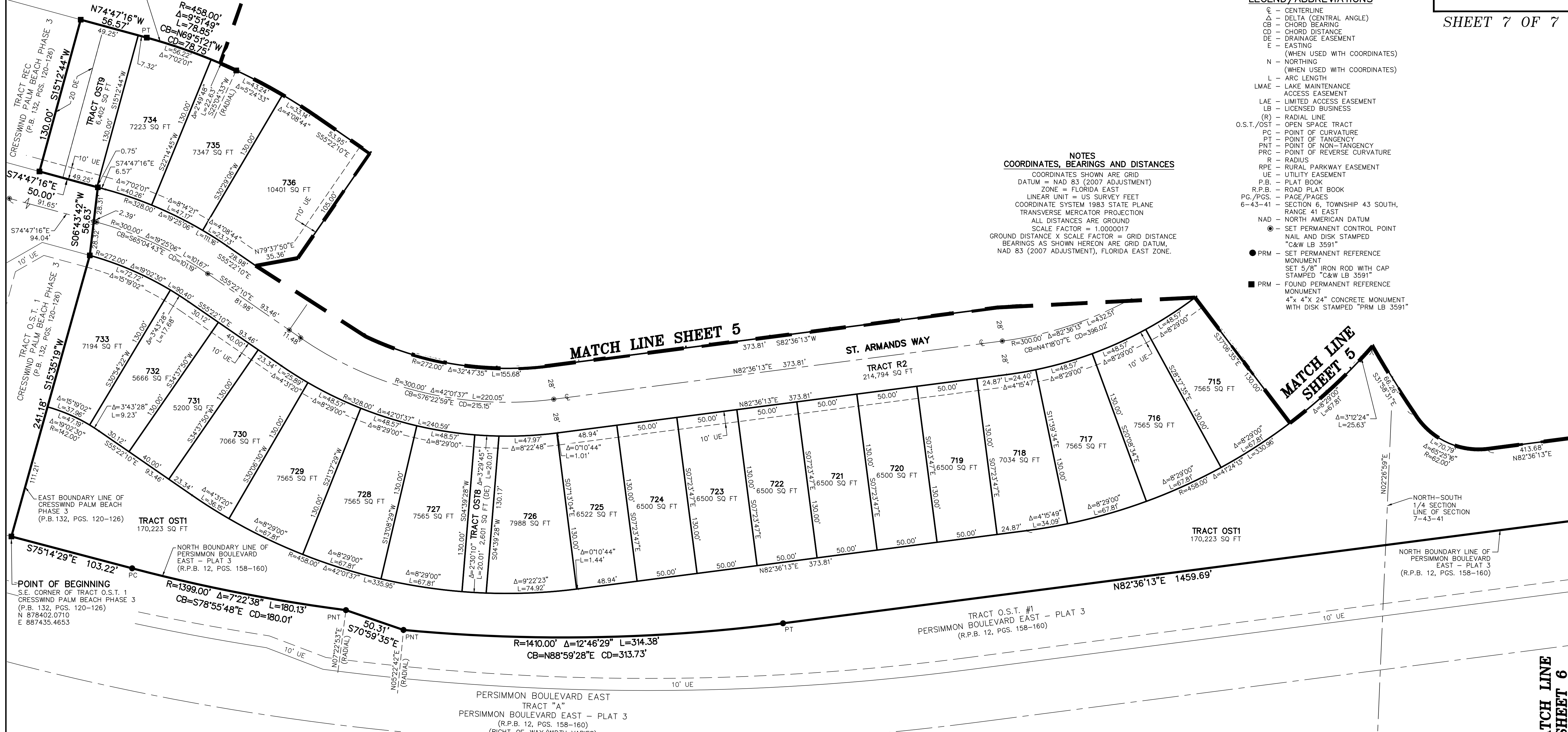
- ⊙ - CENTERLINE
- Δ - DELTA (CENTRAL ANGLE)
- CB - CHORD BEARING
- CD - CHORD DISTANCE
- DE - DRAINAGE EASEMENT
- E - EASTING
- (WHEN USED WITH COORDINATES)
- N - NORTHING
- (WHEN USED WITH COORDINATES)
- L - ARC LENGTH
- LMAE - LAKE MAINTENANCE ACCESS EASEMENT
- LB - LICENSED BUSINESS
- (R) - RADIAL LINE
- O.S.T./OST - OPEN SPACE TRACT
- PC - POINT OF CURVATURE
- PT - POINT OF TANGENCY
- PNT - POINT OF NON-TANGENCY
- PRG - POINT OF REVERSE CURVATURE
- R - RADIUS
- RPE - RURAL PARKWAY EASEMENT
- UE - UTILITY EASEMENT
- P.B. - PLAT BOOK
- R.P.B. - ROAD PLAT BOOK
- PG./PGS. - PAGE/PAGES
- 6-43-41 - SECTION 6, TOWNSHIP 43 SOUTH, RANGE 41 EAST
- NAD - NORTH AMERICAN DATUM
- - SET PERMANENT CONTROL POINT NAIL AND DISK STAMPED "C&W LB 3591"
- - PRM - SET PERMANENT REFERENCE MONUMENT SET 5/8" IRON ROD WITH CAP STAMPED "C&W LB 3591"
- - PRM - FOUND PERMANENT REFERENCE MONUMENT 4" x 4" x 24" CONCRETE MONUMENT WITH DISK STAMPED "PRM LB 3591"

NOTES COORDINATES, BEARINGS AND DISTANCES

COORDINATES SHOWN ARE GRID
DATUM = NAD 83 (2007 ADJUSTMENT)
ZONE = FLORIDA EAST
LINEAR UNIT = US SURVEY FEET
COORDINATE SYSTEM 1983 STATE PLANE
TRANSVERSE MERCATOR PROJECTION
ALL DISTANCES ARE GROUND
SCALE FACTOR = 1.0000017
GROUND DISTANCE X SCALE FACTOR = GRID DISTANCE
BEARINGS AS SHOWN HEREON ARE GRID DATUM,
NAD 83 (2007 ADJUSTMENT), FLORIDA EAST ZONE.

TRACT W-9
CRESSWIND PALM BEACH PHASE 3
(P.B. 132, PGS. 120-126)

EAST BOUNDARY LINE OF
CRESSWIND PALM BEACH
PHASE 3
(P.B. 132, PGS. 120-126)



EAST BOUNDARY LINE OF
CRESSWIND PALM BEACH
PHASE 3
(P.B. 132, PGS. 120-126)

NORTH BOUNDARY LINE OF
PERSIMMON BOULEVARD
EAST - PLAT 3
(R.P.B. 12, PGS. 158-160)

POINT OF BEGINNING
S.E. CORNER OF TRACT O.S.T. #1
CRESSWIND PALM BEACH PHASE 3
(P.B. 132, PGS. 120-126)
N 87°40'02.0710 E 887435.4653

PERSIMMON BOULEVARD EAST
TRACT "A"
PERSIMMON BOULEVARD EAST - PLAT 3
(R.P.B. 12, PGS. 158-160)
(RIGHT-OF-WAY/WIDTH VARIES)

TRACT O.S.T. #1
PERSIMMON BOULEVARD EAST - PLAT 3
(R.P.B. 12, PGS. 158-160)

NORTH-SOUTH
1/4 SECTION
LINE OF SECTION
7-43-41

NORTH BOUNDARY LINE OF
PERSIMMON BOULEVARD
EAST - PLAT 3
(R.P.B. 12, PGS. 158-160)

MATCH LINE
SHEET 6

Exhibit 'C'
CRESSWIND PALM BEACH PHASE 5
TOPOGRAPHICAL SURVEY

THIS PAGE WAS LEFT BLANK ON PURPOSE

NOTES
COORDINATES, BEARINGS AND DISTANCES

COORDINATES SHOWN ARE GRID
DATUM = NAD 83 (2007 ADJUSTMENT)
ZONE = FLORIDA EAST
LINEAR UNIT = US SURVEY FEET
COORDINATE SYSTEM 1983 STATE PLANE
TRANSVERSE MERCATOR PROJECTION
ALL DISTANCES ARE GROUND
SCALE FACTOR = 1.0000017
GROUND DISTANCE X SCALE FACTOR = GRID DISTANCE
BEARINGS AS SHOWN HEREON ARE GRID DATUM,
NAD 83 (2007 ADJUSTMENT), FLORIDA EAST ZONE.

LEGEND/ABBREVIATIONS

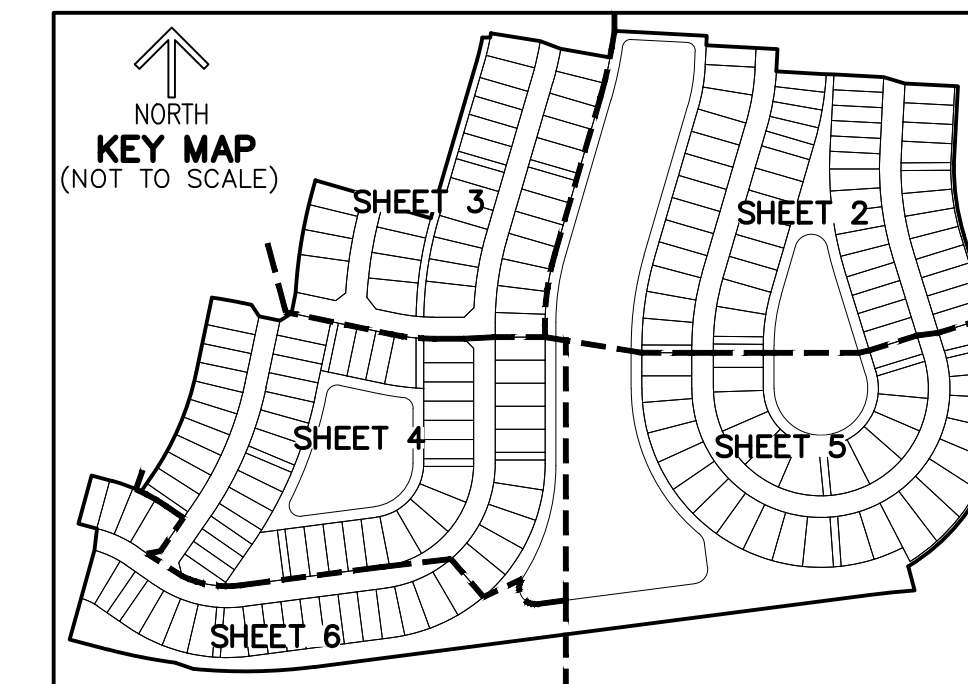
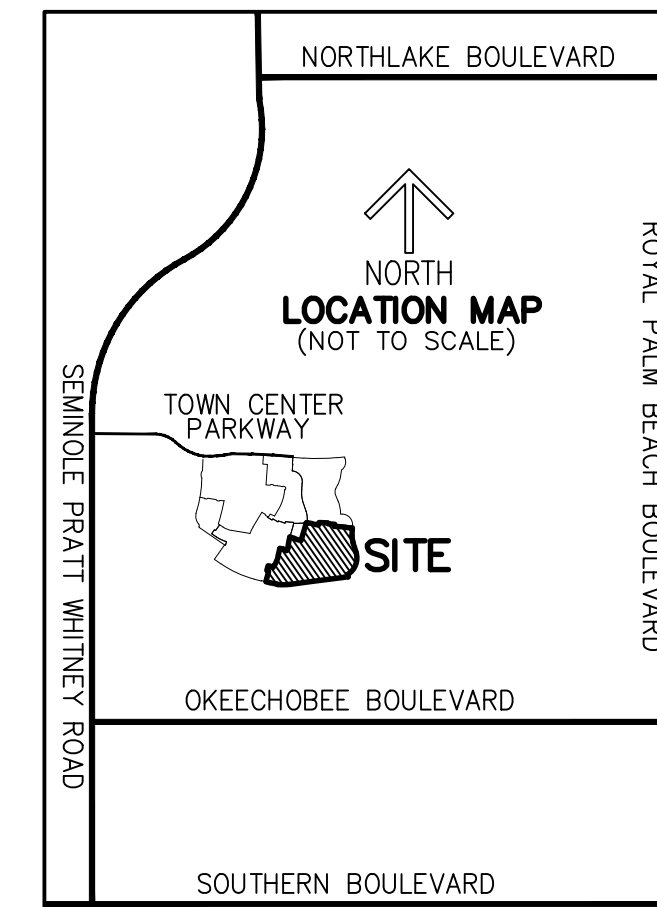
- CL - CENTERLINE
- Δ - DELTA (CENTRAL ANGLE)
- CB - CHORD BEARING
- CD - CHORD DISTANCE
- DE - DRAINAGE EASEMENT
- E - EASTING
(WHEN USED WITH COORDINATES)
- N - NORTHING
(WHEN USED WITH COORDINATES)
- L - ARC LENGTH
- LMAE - LAKE MAINTENANCE
ACCESS EASEMENT
- LAE - LIMITED ACCESS EASEMENT
- LB - LICENSED BUSINESS
- (R) - RADIAL LINE
- O.S.T./OST - OPEN SPACE TRACT
- PC - POINT OF CURVATURE
- PT - POINT OF TANGENCY
- PNT - POINT OF NON-TANGENCY
- PRC - POINT OF REVERSE CURVATURE
- R - RADIUS
- RPE - RURAL PARKWAY EASEMENT
- UE - UTILITY EASEMENT
- P.B. - PLAT BOOK
- R.P.B. - ROAD PLAT BOOK
- PG./PGS. - PAGE/PAGES
- 6-43-41 - SECTION 6, TOWNSHIP 43 SOUTH,
RANGE 41 EAST
- NAD - NORTH AMERICAN DATUM
- - SET PERMANENT CONTROL POINT
NAIL AND DISK STAMPED
"C&W LB 3591"
- - PRM - SET PERMANENT REFERENCE
MONUMENT
SET 5/8" IRON ROD WITH CAP
STAMPED "C&W LB 3591"
- - PRM - FOUND PERMANENT REFERENCE
MONUMENT
4" x 4" x 24" CONCRETE MONUMENT
WITH DISK STAMPED "PRM LB 3591"

DESCRIPTION:

A PORTION OF SECTIONS 6 AND 7, TOWNSHIP 43 SOUTH, RANGE 41 EAST, CITY OF WESTLAKE, PALM BEACH COUNTY, FLORIDA, BEING MORE PARTICULARLY DESCRIBED AS FOLLOWS:

BEGINNING AT THE SOUTHEAST CORNER OF TRACT O.S.T. 1, CRESSWIND PALM BEACH PHASE 3, ACCORDING TO THE PLAT THEREOF, AS RECORDED IN PLAT BOOK 132, PAGES 120 THROUGH 126 OF THE PUBLIC RECORDS OF PALM BEACH COUNTY, FLORIDA, SAID POINT BEING ON THE NORTH BOUNDARY LINE OF PERSIMMON BOULEVARD EAST - PLAT 3, AND THE EASTERLY EXTENSION THEREOF, AS RECORDED IN ROAD PLAT BOOK 12, PAGES 158 THROUGH 160 OF SAID PUBLIC RECORDS, THENCE ALONG SAID NORTH BOUNDARY LINE, THE FOLLOWING FIVE (5) COURSES AND DISTANCES: S75°14'29"E, A DISTANCE OF 103.22 FEET TO THE POINT OF CURVE TO THE LEFT, A RADIAL DISTANCE OF 1,399.00 FEET; THENCE EASTERLY ALONG THE ARC, THROUGH A CENTRAL ANGLE OF 07°22'38", A DISTANCE OF 180.13 FEET TO A POINT OF NON-TANGENCY; THENCE S70°59'35"E, A DISTANCE OF 50.31 FEET TO THE POINT OF CURVE OF A NON TANGENT CURVE TO THE LEFT, OF WHICH THE RADIUS POINT LIES N05°22'42"E, A RADIAL DISTANCE OF 1,410.00 FEET; THENCE EASTERLY ALONG THE ARC, THROUGH A CENTRAL ANGLE OF 12°46'29", A DISTANCE OF 314.38 FEET; THENCE N82°36'13"E, A DISTANCE OF 1,459.69 FEET TO THE POINT OF CURVE TO THE RIGHT, A RADIAL DISTANCE OF 2,190.00 FEET; THENCE EASTERLY ALONG THE ARC, THROUGH A CENTRAL ANGLE OF 03°01'44", A DISTANCE OF 115.77 FEET TO A POINT OF NON-TANGENCY; THENCE N14°48'47"W, A DISTANCE OF 64.89 FEET TO THE POINT OF CURVE OF A NON TANGENT CURVE TO THE LEFT, OF WHICH THE RADIUS POINT LIES N31°05'49"W, A RADIAL DISTANCE OF 518.00 FEET; THENCE NORTHERLY ALONG THE ARC, THROUGH A CENTRAL ANGLE OF 76°07'29", A DISTANCE OF 688.23 FEET; THENCE N17°13'19"W, A DISTANCE OF 276.23 FEET TO THE POINT OF CURVE TO THE RIGHT, A RADIAL DISTANCE OF 592.00 FEET; THENCE NORTHERLY ALONG THE ARC, THROUGH A CENTRAL ANGLE OF 18°14'47", A DISTANCE OF 188.53 FEET TO A POINT OF NON-TANGENCY; THENCE N02°57'09"E, A DISTANCE OF 203.52 FEET TO THE POINT BEING ON THE SOUTH BOUNDARY LINE OF CRESSWIND PALM BEACH PHASE 4, AS RECORDED IN PLAT BOOK _____, PAGES _____ THROUGH _____ OF SAID PUBLIC RECORDS, THENCE ALONG SAID SOUTH BOUNDARY LINE, THE FOLLOWING FOURTEEN (14) COURSES AND DISTANCES: N87°02'51"W, A DISTANCE OF 138.00 FEET; THENCE N72°52'20"W, A DISTANCE OF 57.76 FEET; THENCE N87°02'51"W, A DISTANCE OF 130.00 FEET; THENCE N87°47'15"W, A DISTANCE OF 30.08 FEET; THENCE N86°46'06"W, A DISTANCE OF 120.00 FEET TO THE POINT OF CURVE OF A NON TANGENT CURVE TO THE LEFT, OF WHICH THE RADIUS POINT LIES N86°46'06"W, A RADIAL DISTANCE OF 670.00 FEET; THENCE NORTHERLY ALONG THE ARC, THROUGH A CENTRAL ANGLE OF 00°12'10", A DISTANCE OF 2.37 FEET; THENCE N03°01'44"E, A DISTANCE OF 55.78 FEET; THENCE N86°58'16"W, A DISTANCE OF 186.00 FEET; THENCE N03°01'44"E, A DISTANCE OF 25.02 FEET; THENCE N86°58'16"W, A DISTANCE OF 240.52 FEET; THENCE S09°58'31"W, A DISTANCE OF 70.38 FEET; THENCE N80°01'29"W, A DISTANCE OF 130.00 FEET; THENCE N89°30'20"W, A DISTANCE OF 57.03 FEET; THENCE N80°47'51"W, A DISTANCE OF 130.00 FEET TO A POINT ON THE EAST BOUNDARY LINE OF CRESSWIND PALM BEACH PHASE 2, AS RECORDED IN PLAT BOOK 130, PAGES 199 THROUGH 205 OF SAID PUBLIC RECORDS, THENCE ALONG SAID EAST BOUNDARY LINE, THE FOLLOWING TWO (2) COURSES AND DISTANCES: SAID POINT BEING ON THE CURVE OF A NON TANGENT CURVE TO THE RIGHT, OF WHICH THE RADIUS POINT LIES N80°47'51"W, A RADIAL DISTANCE OF 642.00 FEET; THENCE SOUTHERLY ALONG THE ARC, THROUGH A CENTRAL ANGLE OF 01°00'23", A DISTANCE OF 11.28 FEET TO A POINT OF NON-TANGENCY; THENCE S89°16'47"W, A DISTANCE OF 20.38 FEET TO THE POINT BEING ON THE EAST BOUNDARY LINE OF SAID CRESSWIND PALM BEACH PHASE 4; THENCE ALONG SAID EAST BOUNDARY LINE, THE FOLLOWING TWO (2) COURSES AND DISTANCES: SAID POINT BEING ON THE CURVE OF A NON TANGENT CURVE TO THE RIGHT, OF WHICH THE RADIUS POINT LIES N79°26'07"W, A RADIAL DISTANCE OF 622.00 FEET; THENCE SOUTHERLY ALONG THE ARC, THROUGH A CENTRAL ANGLE OF 05°42'54", A DISTANCE OF 82.04 FEET; THENCE S18°16'48"W, A DISTANCE OF 421.43 FEET TO THE POINT BEING ON THE SOUTH BOUNDARY LINE OF SAID PLAT; THENCE ALONG SAID SOUTH BOUNDARY LINE, THE FOLLOWING THREE (3) COURSES AND DISTANCES: N73°43'12"W, A DISTANCE OF 130.00 FEET; THENCE N68°52'46"W, A DISTANCE OF 56.20 FEET; THENCE N73°43'12"W, A DISTANCE OF 130.00 FEET TO THE POINT BEING ON THE EAST BOUNDARY LINE OF CRESSWIND PALM BEACH PHASE 3, AS RECORDED IN PLAT BOOK 132, PAGES 120 THROUGH 126 OF SAID PUBLIC RECORDS, THENCE ALONG SAID EAST BOUNDARY LINE, THE FOLLOWING SIXTEEN (16) COURSES AND DISTANCES: SAID POINT BEING ON THE CURVE OF A NON TANGENT CURVE TO THE LEFT, OF WHICH THE RADIUS POINT LIES S73°24'03"E, A RADIAL DISTANCE OF 1,295.47 FEET; THENCE SOUTHERLY ALONG THE ARC, THROUGH A CENTRAL ANGLE OF 13°06'43", A DISTANCE OF 296.46 FEET; THENCE S09°58'31"W, A DISTANCE OF 56.01 FEET; THENCE S57°18'31"W, A DISTANCE OF 35.62 FEET; THENCE N78°08'51"W, A DISTANCE OF 56.00 FEET; THENCE N33°06'51"W, A DISTANCE OF 35.36 FEET; THENCE N78°08'51"W, A DISTANCE OF 24.70 FEET TO THE POINT OF CURVE TO THE LEFT, A RADIAL DISTANCE OF 1,172.00 FEET; THENCE WESTERLY ALONG THE ARC, THROUGH A CENTRAL ANGLE OF 03°55'43", A DISTANCE OF 80.36 FEET TO A POINT OF NON-TANGENCY; THENCE S11°53'09"W, A DISTANCE OF 199.93 FEET TO THE POINT OF CURVE TO THE RIGHT, A RADIAL DISTANCE OF 742.00 FEET; THENCE SOUTHWESTERLY ALONG THE ARC, THROUGH A CENTRAL ANGLE OF 22°44'41", A DISTANCE OF 294.55 FEET; THENCE S34°37'50"W, A DISTANCE OF 49.53 FEET TO THE POINT OF CURVE OF A NON TANGENT CURVE TO THE LEFT, OF WHICH THE RADIUS POINT LIES S25°04'33"W, A RADIAL DISTANCE OF 458.00 FEET; THENCE WESTERLY ALONG THE ARC, THROUGH A CENTRAL ANGLE OF 09°51'49", A DISTANCE OF 78.85 FEET; THENCE N74°47'16"W, A DISTANCE OF 56.57 FEET; THENCE S15°12'44"W, A DISTANCE OF 130.00 FEET; THENCE S74°47'16"E, A DISTANCE OF 50.00 FEET; THENCE S06°43'42"W, A DISTANCE OF 56.63 FEET; THENCE S15°35'19"W, A DISTANCE OF 241.18 FEET TO THE POINT OF BEGINNING.

CONTAINING 2,837,901 SQUARE FEET/65.1492 ACRES, MORE OR LESS.



SURVEYOR'S NOTES AND REPORT:

1. REPRODUCTIONS OF THIS SURVEY ARE NOT VALID WITHOUT A SIGNED AND SEALED OR VERIFIABLE ELECTRONIC SIGNATURE OF A FLORIDA LICENSED PROFESSIONAL LAND SURVEYOR AND MAPPER
2. ADDITIONS OR DELETIONS TO SURVEY MAPS OR REPORTS BY OTHER THAN THE SIGNING PARTY OR PARTIES IS PROHIBITED WITHOUT WRITTEN CONSENT OF THE SIGNING PARTY OR PARTIES.
3. THE LAND DESCRIPTION SHOWN HEREON WAS PREPARED BY THE SURVEYOR.
5. BEARINGS SHOWN HEREON ARE BASED ON A RECORD PLAT BEARING OF S11°53'09"W ALONG THE EAST LINE OF TRACT W-9, CRESSWIND PALM BEACH PHASE 3, AS RECORDED IN PLAT BOOK 132, PAGES 120 THROUGH 126 OF THE PUBLIC RECORDS OF PALM BEACH COUNTY, FLORIDA, AND RELATIVE TO THE FLORIDA STATE PLANE COORDINATE SYSTEM, EAST ZONE, NORTH AMERICAN DATUM OF 1983 (2007 ADJUSTMENT).
6. COORDINATES SHOWN HEREON ARE RELATIVE TO THE FLORIDA STATE PLANE COORDINATE SYSTEM, EAST ZONE, NORTH AMERICAN DATUM OF 1983 (2007 ADJUSTMENT), AND BASED ON REDUNDANT G.P.S. OBSERVATIONS UTILIZING THE CERTIFIED LENGEMAN NETWORK.
7. LANDS SHOWN HEREON WERE NOT ABSTRACTED, BY THE SURVEYOR, FOR RIGHTS-OF-WAY, EASEMENTS, OWNERSHIP, OR OTHER INSTRUMENTS OF RECORD.

CERTIFICATE:

I HEREBY CERTIFY THAT THE ATTACHED BOUNDARY SURVEY OF THE HEREON DESCRIBED PROPERTY IS TRUE AND CORRECT TO THE BEST OF MY KNOWLEDGE AND BELIEF AS PREPARED UNDER MY DIRECTION ON OCTOBER 15, 2021. I FURTHER CERTIFY THAT THIS BOUNDARY SURVEY MEETS THE STANDARDS OF PRACTICE SET FORTH IN RULE 5J-17, FLORIDA ADMINISTRATIVE CODE, ADOPTED BY THE FLORIDA BOARD OF PROFESSIONAL SURVEYORS AND MAPPERS, PURSUANT TO FLORIDA STATUTES CHAPTER 472.027.

REVISIONS	DATE	BY
FILE NAME: 8272-PHASE3-SURVEY-1		

CAULFIELD & WHEELER, INC.

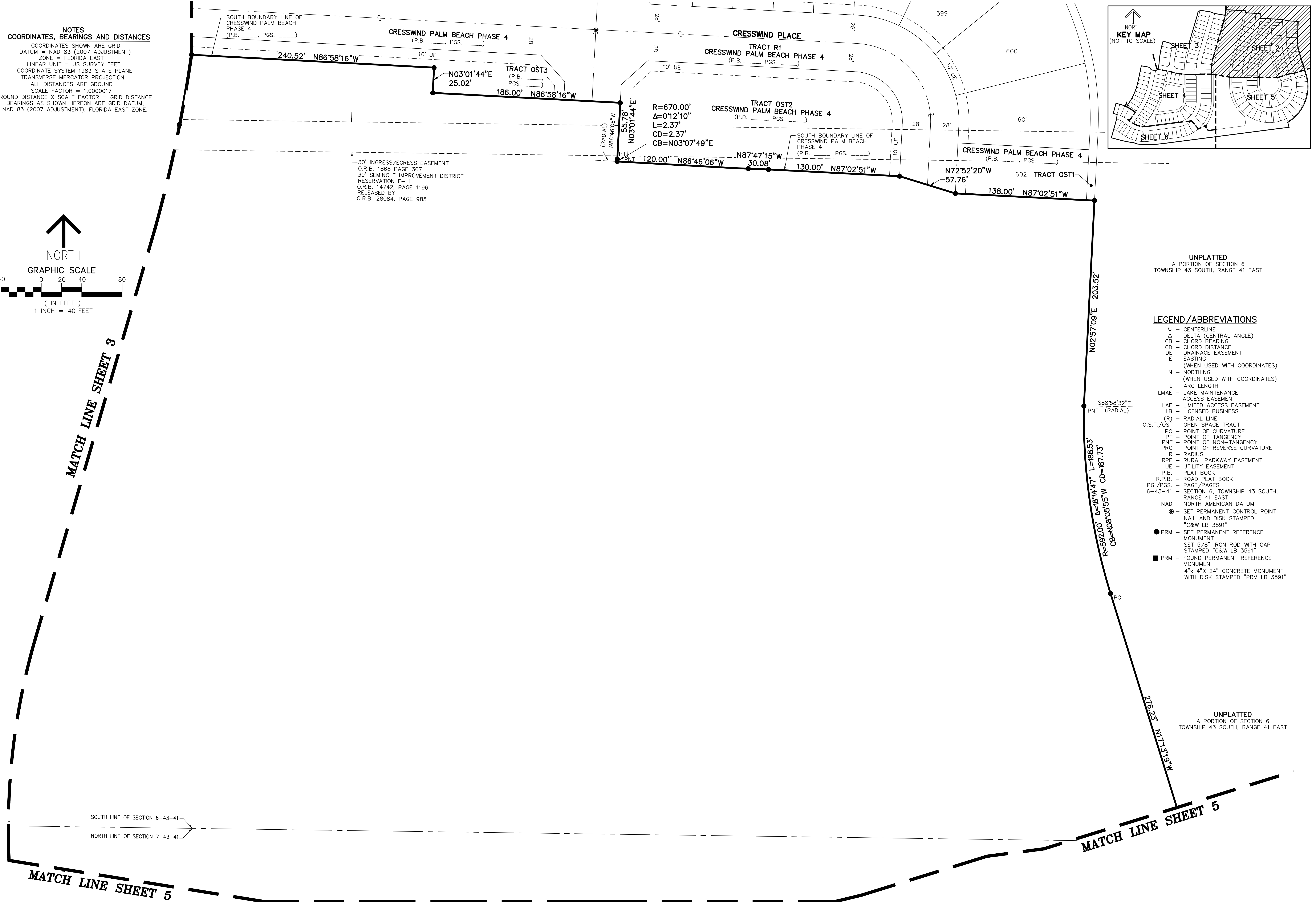
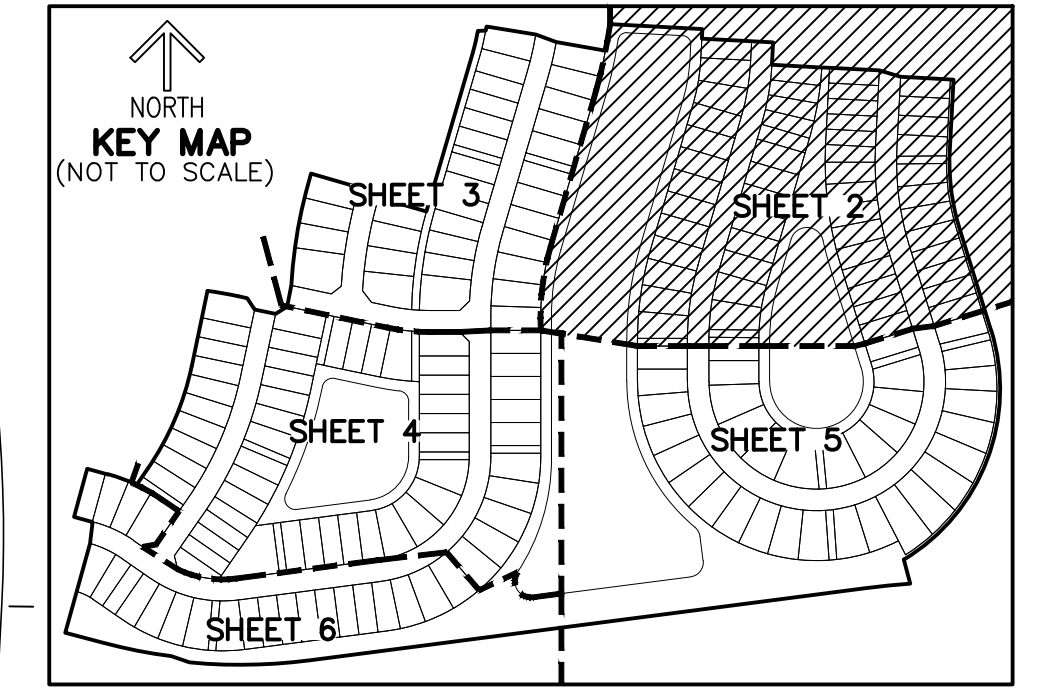
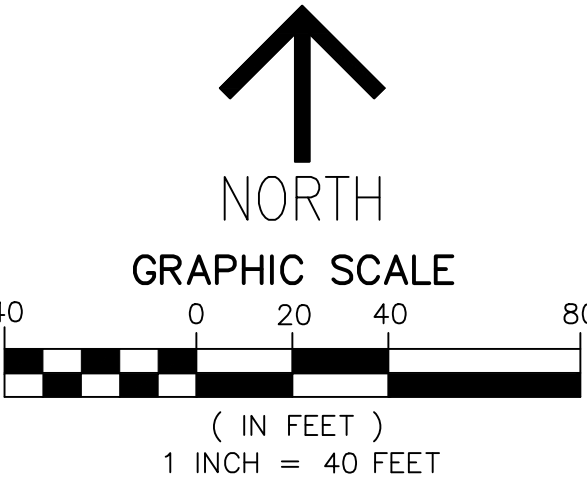
BOUNDARY SURVEY
A PORTION OF SECTIONS 6 AND 7
TOWNSHIP 43 SOUTH, RANGE 41 EAST
CITY OF WESTLAKE
PALM BEACH COUNTY, FLORIDA

DATE 10/15/2021
DRAWN BY AS
F.B./ PG. ELEC
SCALE AS SHOWN

DAVID P. LINDLEY
REGISTERED LAND
SURVEYOR NO. 5005
STATE OF FLORIDA
L.B. 3591

JOB # 8272-5
SHT.NO.
1
OF 6 SHEETS

NOTES
COORDINATES, BEARINGS AND DISTANCES
 COORDINATES SHOWN ARE GRID
 DATUM = NAD 83 (2007 ADJUSTMENT)
 ZONE = FLORIDA EAST
 LINEAR UNIT = US SURVEY FEET
 COORDINATE SYSTEM 1983 STATE PLANE
 TRANSVERSE MERCATOR PROJECTION
 ALL DISTANCES ARE GROUND
 SCALE FACTOR = 1.0000017
 GROUND DISTANCE X SCALE FACTOR = GRID DISTANCE
 BEARINGS AS SHOWN HEREON ARE GRID DATUM,
 NAD 83 (2007 ADJUSTMENT), FLORIDA EAST ZONE.



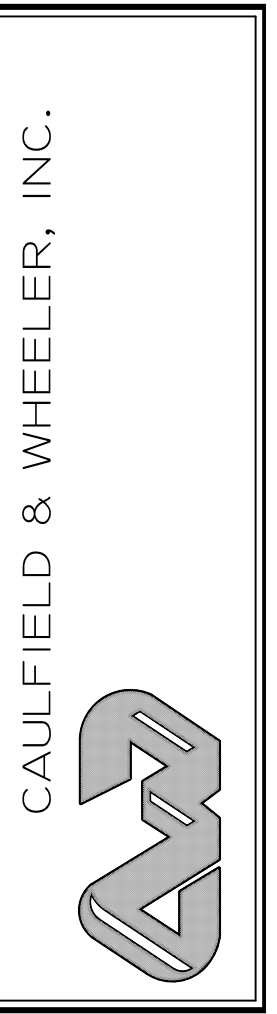
30' INGRESS/EGRESS EASEMENT
 O.R.B. 1868 PAGE 307
 30' SEMINOLE IMPROVEMENT DISTRICT
 RESERVATION F-11
 O.R.B. 14742, PAGE 1196
 RELEASED BY
 O.R.B. 28084, PAGE 985

UNPLATTED
 A PORTION OF SECTION 6
 TOWNSHIP 43 SOUTH, RANGE 41 EAST

- LEGEND/ABBREVIATIONS**
- CL - CENTERLINE
 - Δ - DELTA (CENTRAL ANGLE)
 - CB - CHORD BEARING
 - CD - CHORD DISTANCE
 - DE - DRAINAGE EASEMENT
 - E - EASTING
 - (WHEN USED WITH COORDINATES)
 - N - NORTHING
 - (WHEN USED WITH COORDINATES)
 - L - ARC LENGTH
 - LMAE - LAKE MAINTENANCE ACCESS EASEMENT
 - LAE - LIMITED ACCESS EASEMENT
 - LB - LICENSED BUSINESS
 - (R) - RADIAL LINE
 - O.S.T./OST - OPEN SPACE TRACT
 - PC - POINT OF CURVATURE
 - PT - POINT OF TANGENCY
 - PNT - POINT OF NON-TANGENCY
 - PRC - POINT OF REVERSE CURVATURE
 - R - RADIUS
 - RPE - RURAL PARKWAY EASEMENT
 - UE - UTILITY EASEMENT
 - P.B. - PLAT BOOK
 - R.P.B. - ROAD PLAT BOOK
 - PG./PGS. - PAGE/PAGES
 - 6-43-41 - SECTION 6, TOWNSHIP 43 SOUTH, RANGE 41 EAST
 - NAD - NORTH AMERICAN DATUM
 - - SET PERMANENT CONTROL POINT NAIL AND DISK STAMPED "C&W LB 3591"
 - - SET PERMANENT REFERENCE MONUMENT SET 5/8" IRON ROD WITH CAP STAMPED "C&W LB 3591"
 - - FOUND PERMANENT REFERENCE MONUMENT 4"x 4"x 24" CONCRETE MONUMENT WITH DISK STAMPED "PRM LB 3591"

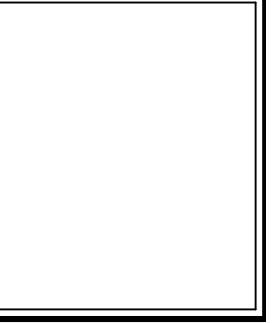
UNPLATTED
 A PORTION OF SECTION 6
 TOWNSHIP 43 SOUTH, RANGE 41 EAST

REVISIONS	DATE	BY
FILE NAME: 8272-PHASE5-SURVEY-1		

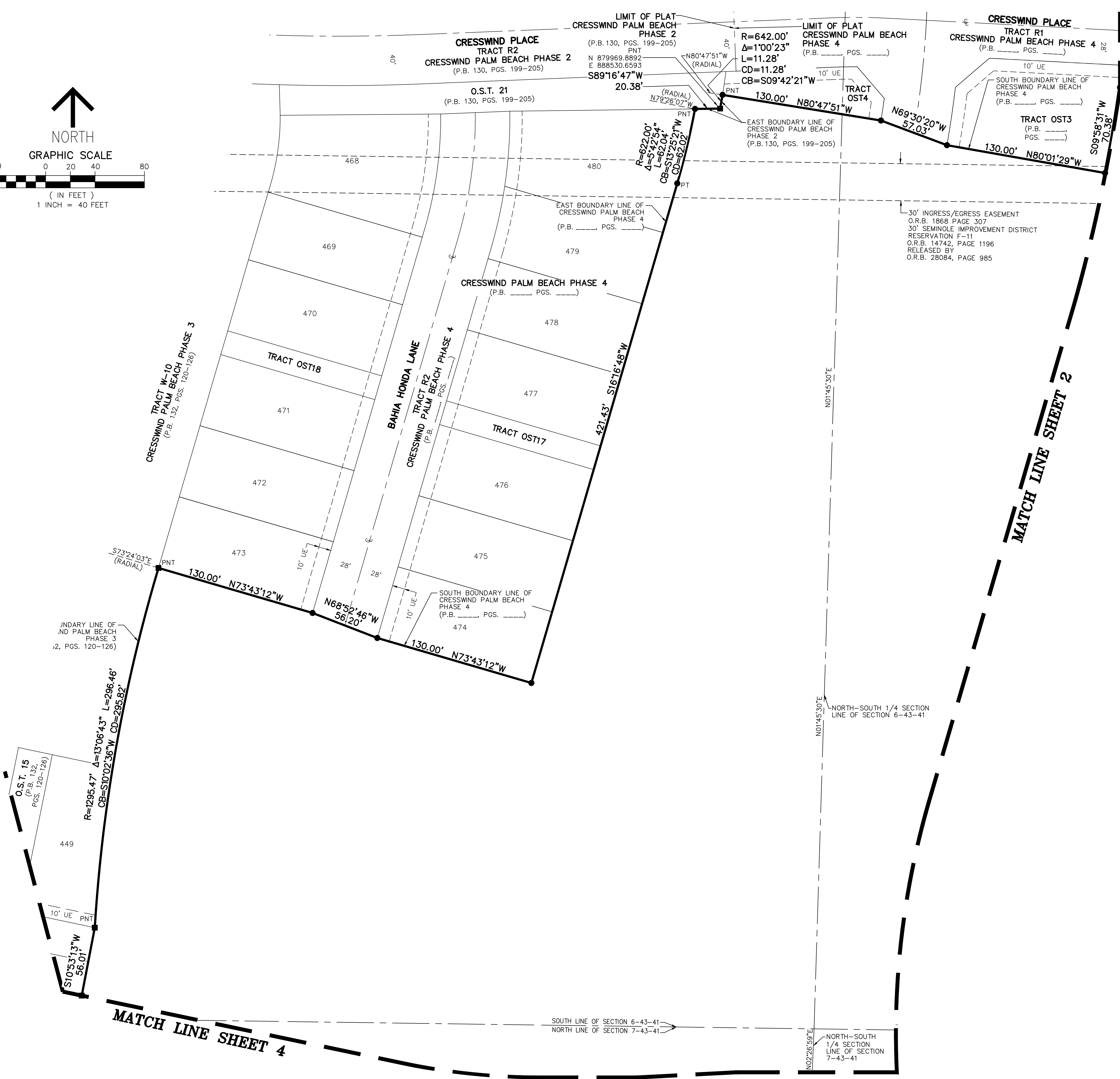
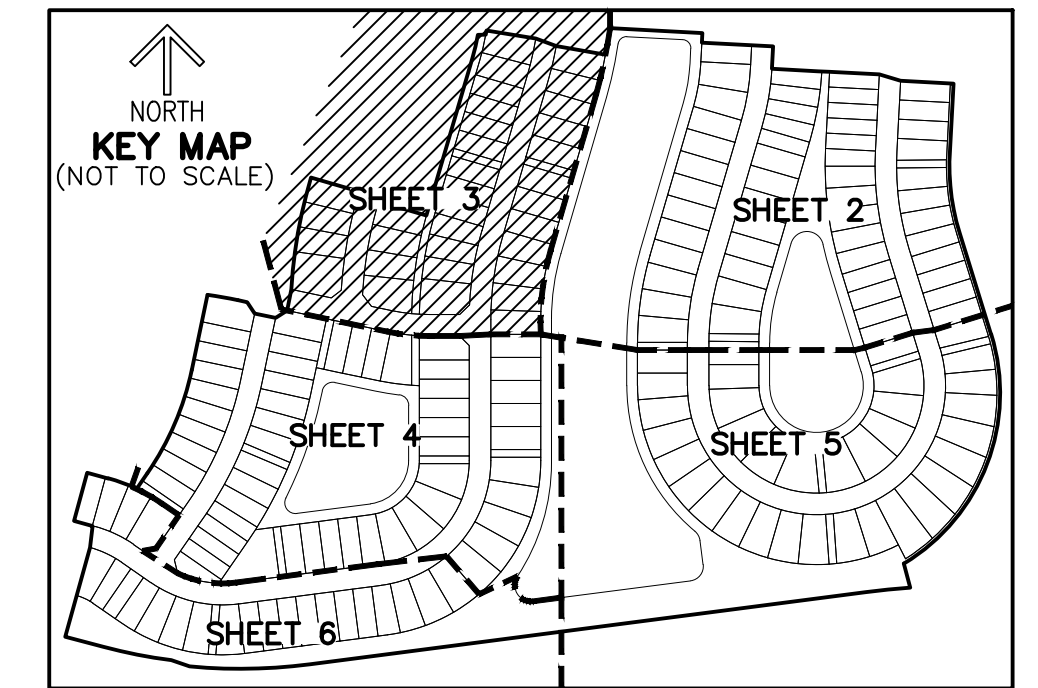
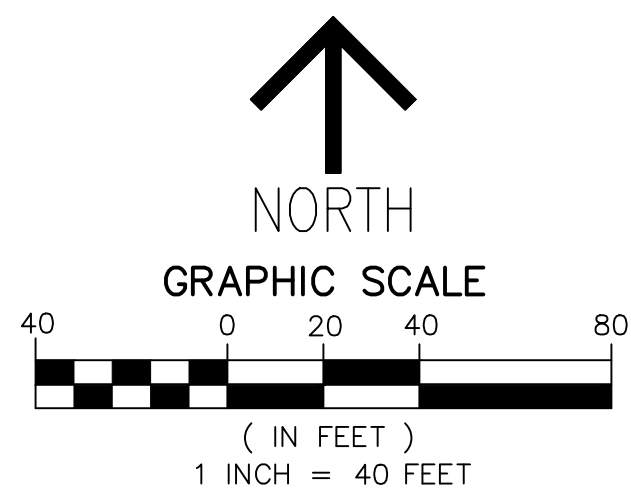


BOUNDARY SURVEY OF SECTIONS 6 AND 7
 A PORTION OF SECTION 6
 TOWNSHIP 43 SOUTH, RANGE 41 EAST
 CITY OF WESTLAKE
 PALM BEACH COUNTY, FLORIDA

DATE 10/15/2021
 DRAWN BY AS
 F.B./ PG. ELEC
 SCALE AS SHOWN



JOB # 8272-5
 SHT. NO. 2
 OF 6 SHEETS



LEGEND/ABBREVIATIONS

- CL - CENTERLINE
- Δ - DELTA (CENTRAL ANGLE)
- CB - CHORD BEARING
- CD - CHORD DISTANCE
- DE - DRAINAGE EASEMENT
- E - EASTING
- () - (WHEN USED WITH COORDINATES)
- N - NORTHING
- () - (WHEN USED WITH COORDINATES)
- L - ARC LENGTH
- LMAE - LAKE MAINTENANCE ACCESS EASEMENT
- LAE - LIMITED ACCESS EASEMENT
- LB - LICENSED BUSINESS
- (R) - RADIAL LINE
- O.S.T./OST - OPEN SPACE TRACT
- PC - POINT OF CURVATURE
- PT - POINT OF TANGENCY
- PNT - POINT OF NON-TANGENCY
- PRC - POINT OF REVERSE CURVATURE
- R - RADIUS
- RPE - RURAL PARKWAY EASEMENT
- UE - UTILITY EASEMENT
- P.B. - PLAT BOOK
- R.P.B. - ROAD PLAT BOOK
- PG./PGS. - PAGE/PAGES
- 6-43-41 - SECTION 6, TOWNSHIP 43 SOUTH, RANGE 41 EAST
- NAD - NORTH AMERICAN DATUM
- - SET PERMANENT CONTROL POINT NAIL AND DISK STAMPED "C&W LB 3591"
- - SET PERMANENT REFERENCE MONUMENT SET 5/8" IRON ROD WITH CAP STAMPED "C&W LB 3591"
- - SET PERMANENT REFERENCE MONUMENT 4" x 4" x 24" CONCRETE MONUMENT WITH DISK STAMPED "PRM LB 3591"

**NOTES
COORDINATES, BEARINGS AND DISTANCES**

COORDINATES SHOWN ARE GRID
 DATUM = NAD 83 (2007 ADJUSTMENT)
 ZONE = FLORIDA EAST
 LINEAR UNIT = US SURVEY FEET
 COORDINATE SYSTEM 1983 STATE PLANE
 TRANSVERSE MERCATOR PROJECTION
 ALL DISTANCES ARE GROUND
 SCALE FACTOR = 1.0000017
 GROUND DISTANCE X SCALE FACTOR = GRID DISTANCE
 BEARINGS AS SHOWN HEREON ARE GRID DATUM,
 NAD 83 (2007 ADJUSTMENT), FLORIDA EAST ZONE.

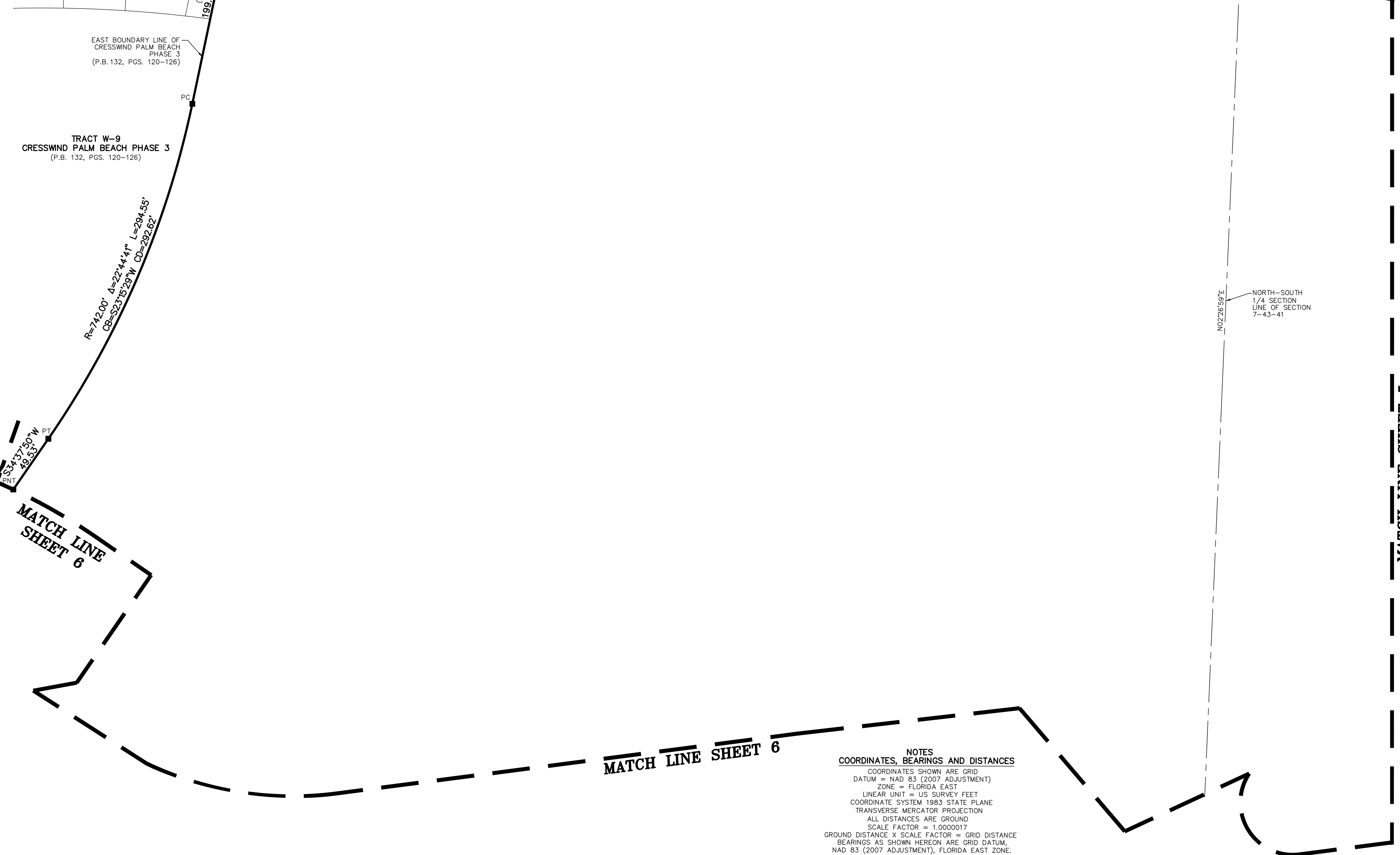
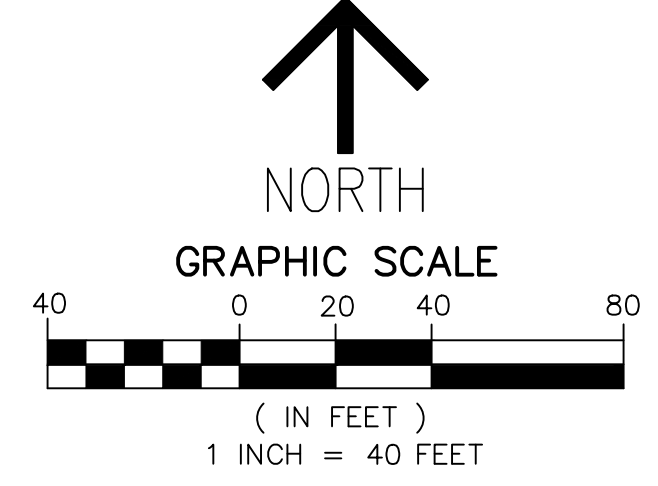
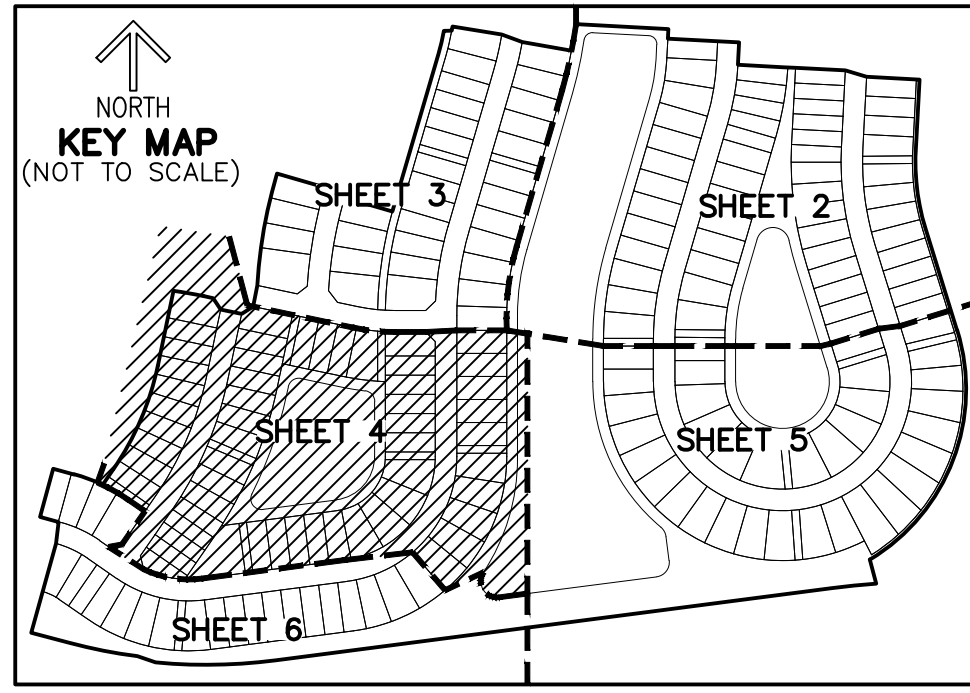
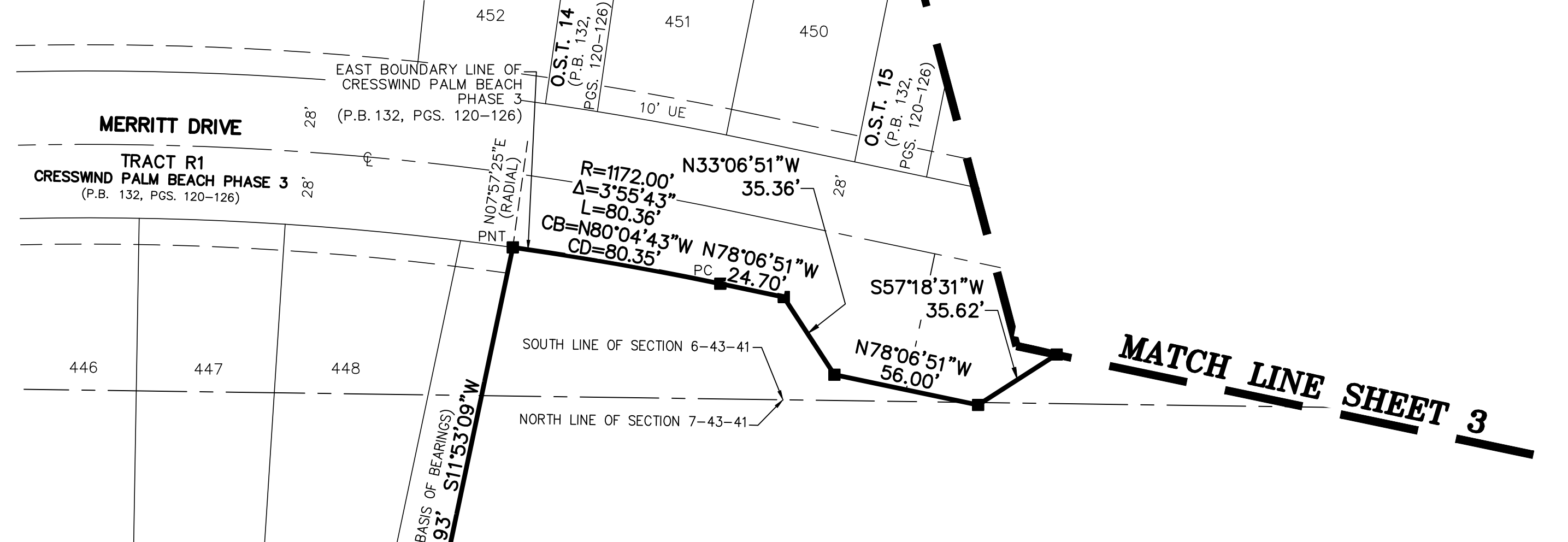
REVISIONS	DATE	BY

CAULFIELD & WHEELER, INC.

BOUNDARY SURVEY OF SECTIONS 6 AND 7
 A PORTION OF SECTIONS 6 AND 7
 TOWNSHIP 43 SOUTH, RANGE 41 EAST
 CITY OF WESTLAKE
 PALM BEACH COUNTY, FLORIDA

DATE 10/15/2021
 DRAWN BY AS
 F.B./ PG. ELEC
 SCALE AS SHOWN

JOB # 8272-5
 SHT. NO. 3
 OF 6 SHEETS



- LEGEND/ABBREVIATIONS**
- ⊙ - CENTERLINE
 - Δ - DELTA (CENTRAL ANGLE)
 - CB - CHORD BEARING
 - CD - CHORD DISTANCE
 - DE - DRAINAGE EASEMENT
 - E - EASTING
 - (WHEN USED WITH COORDINATES)
 - N - NORTHING
 - (WHEN USED WITH COORDINATES)
 - L - ARC LENGTH
 - LMAE - LAKE MAINTENANCE ACCESS EASEMENT
 - LAE - LIMITED ACCESS EASEMENT
 - LB - LICENSED BUSINESS
 - (R) - RADIAL LINE
 - O.S.T./OST - OPEN SPACE TRACT
 - PC - POINT OF CURVATURE
 - PT - POINT OF TANGENCY
 - PNT - POINT OF NON-TANGENCY
 - PRC - POINT OF REVERSE CURVATURE
 - R - RADIUS
 - RPE - RURAL PARKWAY EASEMENT
 - UE - UTILITY EASEMENT
 - P.B. - PLAT BOOK
 - R.P.B. - ROAD PLAT BOOK
 - PG./PGS. - PAGE/PAGES
 - 6-43-41 - SECTION 6, TOWNSHIP 43 SOUTH, RANGE 41 EAST
 - NAD - NORTH AMERICAN DATUM
 - - SET PERMANENT CONTROL POINT NAIL AND DISK STAMPED "C&W LB 3591"
 - - SET PERMANENT REFERENCE MONUMENT SET 5/8" IRON ROD WITH CAP STAMPED "C&W LB 3591"
 - - FOUND PERMANENT REFERENCE MONUMENT 4"x 4"x 24" CONCRETE MONUMENT WITH DISK STAMPED "PRM LB 3591"

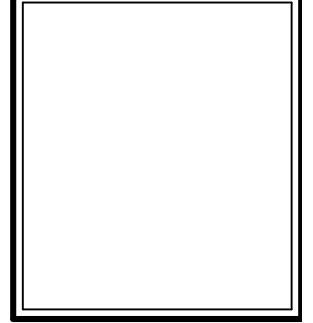
NOTES
COORDINATES, BEARINGS AND DISTANCES
 COORDINATES SHOWN ARE GRID
 DATUM = NAD 83 (2007 ADJUSTMENT)
 ZONE = FLORIDA EAST
 LINEAR UNIT = US SURVEY FEET
 COORDINATE SYSTEM 1983 STATE PLANE
 TRANSVERSE MERCATOR PROJECTION
 ALL DISTANCES ARE GROUND
 SCALE FACTOR = 1.0000017
 GROUND DISTANCE X SCALE FACTOR = GRID DISTANCE
 BEARINGS AS SHOWN HEREON ARE GRID DATUM,
 NAD 83 (2007 ADJUSTMENT), FLORIDA EAST ZONE.

REVISIONS	DATE	BY

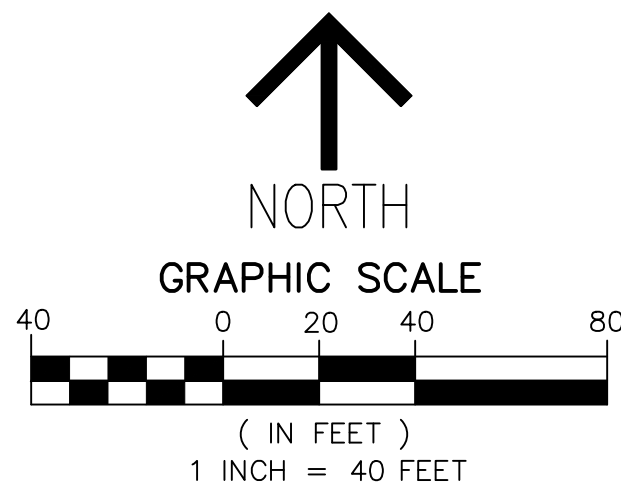


BOUNDARY SURVEY OF SECTIONS 6 AND 7
 A PORTION OF SECTIONS 6 AND 7
 TOWNSHIP 43 SOUTH, RANGE 41 EAST
 CITY OF WESTLAKE
 PALM BEACH COUNTY, FLORIDA

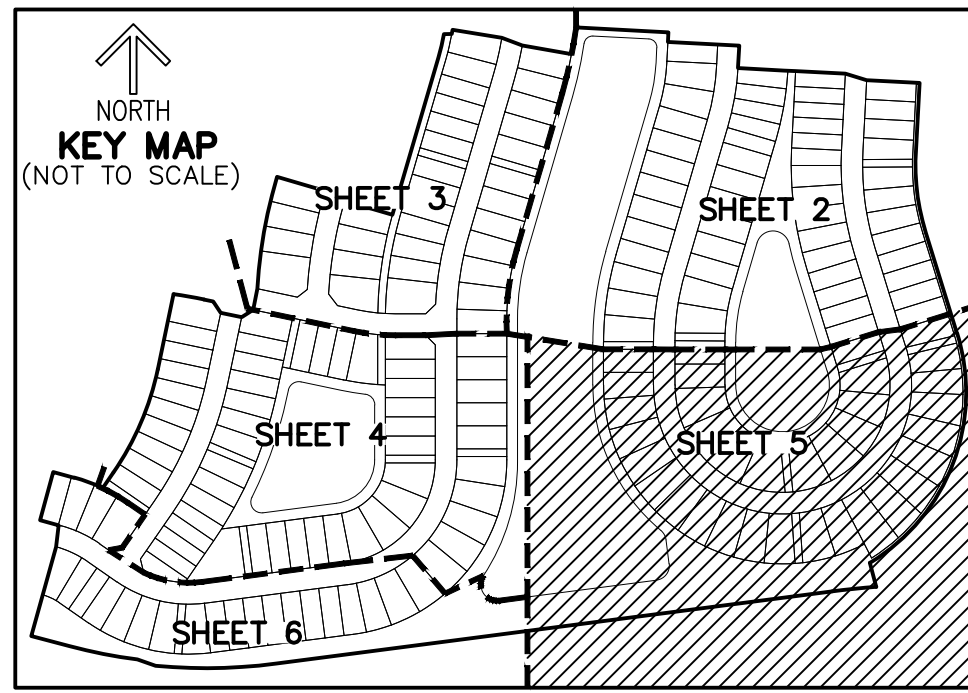
DATE 10/15/2021
 DRAWN BY AS
 F.B./ PG. ELEC
 SCALE AS SHOWN



JOB # 8272-5
 SHT.NO.
 4
 OF 6 SHEETS



- LEGEND/ABBREVIATIONS**
- CL - CENTERLINE
 - Δ - DELTA (CENTRAL ANGLE)
 - CB - CHORD BEARING
 - CD - CHORD DISTANCE
 - DE - DRAINAGE EASEMENT
 - E - EASTING
 - (WHEN USED WITH COORDINATES)
 - N - NORTHING
 - (WHEN USED WITH COORDINATES)
 - L - ARC LENGTH
 - LMAE - LAKE MAINTENANCE ACCESS EASEMENT
 - LAE - LIMITED ACCESS EASEMENT
 - LB - LICENSED BUSINESS
 - (R) - RADIAL LINE
 - O.S.T./OST - OPEN SPACE TRACT
 - PC - POINT OF CURVATURE
 - PT - POINT OF TANGENCY
 - PNT - POINT OF NON-TANGENCY
 - PRC - POINT OF REVERSE CURVATURE
 - R - RADIUS
 - RPE - RURAL PARKWAY EASEMENT
 - UE - UTILITY EASEMENT
 - 6-43-41 - SECTION 6, TOWNSHIP 43 SOUTH, RANGE 41 EAST
 - P.B. - PLAT BOOK
 - R.P.B. - ROAD PLAT BOOK
 - PG./PGS. - PAGE/PAGES
 - NAD - NORTH AMERICAN DATUM
 - - SET PERMANENT CONTROL POINT NAIL AND DISK STAMPED "C&W LB 3591"
 - - SET PERMANENT REFERENCE MONUMENT SET 5/8" IRON ROD WITH CAP STAMPED "C&W LB 3591"
 - - FOUND PERMANENT REFERENCE MONUMENT 4"x 4"x 24" CONCRETE MONUMENT WITH DISK STAMPED "PRM LB 3591"

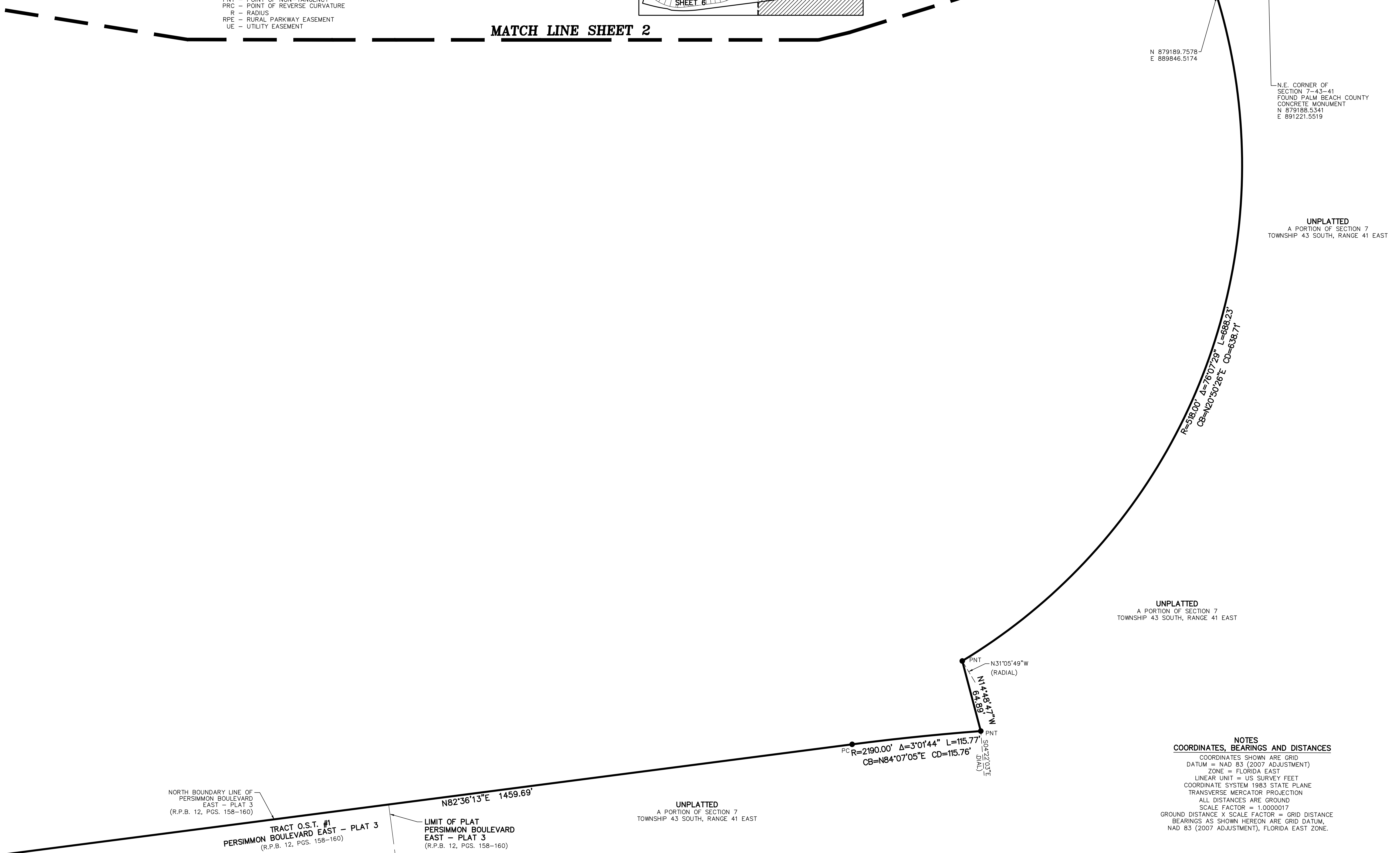


MATCH LINE SHEET 4

MATCH LINE SHEET 6

MATCH LINE SHEET 2

MATCH LINE SHEET 2



UNPLATTED
A PORTION OF SECTION 6-43-41

S. LINE OF SECTION 6-43-41

NORTH LINE OF SECTION 7-43-41

N 879189.7578
E 889846.5174

N 1375.04'
N89°56'56\"/>

N.E. CORNER OF SECTION 7-43-41 FOUND PALM BEACH COUNTY CONCRETE MONUMENT
N 879188.5341
E 891221.5519

UNPLATTED
A PORTION OF SECTION 7 TOWNSHIP 43 SOUTH, RANGE 41 EAST

UNPLATTED
A PORTION OF SECTION 7 TOWNSHIP 43 SOUTH, RANGE 41 EAST

NORTH BOUNDARY LINE OF PERSIMMON BOULEVARD EAST - PLAT 3 (R.P.B. 12, PGS. 158-160)

TRACT O.S.T. #1 PERSIMMON BOULEVARD EAST - PLAT 3 (R.P.B. 12, PGS. 158-160)

LIMIT OF PLAT PERSIMMON BOULEVARD EAST - PLAT 3 (R.P.B. 12, PGS. 158-160)

UNPLATTED
A PORTION OF SECTION 7 TOWNSHIP 43 SOUTH, RANGE 41 EAST

NOTES
COORDINATES, BEARINGS AND DISTANCES

COORDINATES SHOWN ARE GRID
DATUM = NAD 83 (2007 ADJUSTMENT)
ZONE = FLORIDA EAST
LINEAR UNIT = US SURVEY FEET
COORDINATE SYSTEM 1983 STATE PLANE TRANSVERSE MERCATOR PROJECTION
ALL DISTANCES ARE GROUND
SCALE FACTOR = 1.0000017
GROUND DISTANCE X SCALE FACTOR = GRID DISTANCE
BEARINGS AS SHOWN HEREON ARE GRID DATUM, NAD 83 (2007 ADJUSTMENT), FLORIDA EAST ZONE.

REVISIONS	DATE	BY

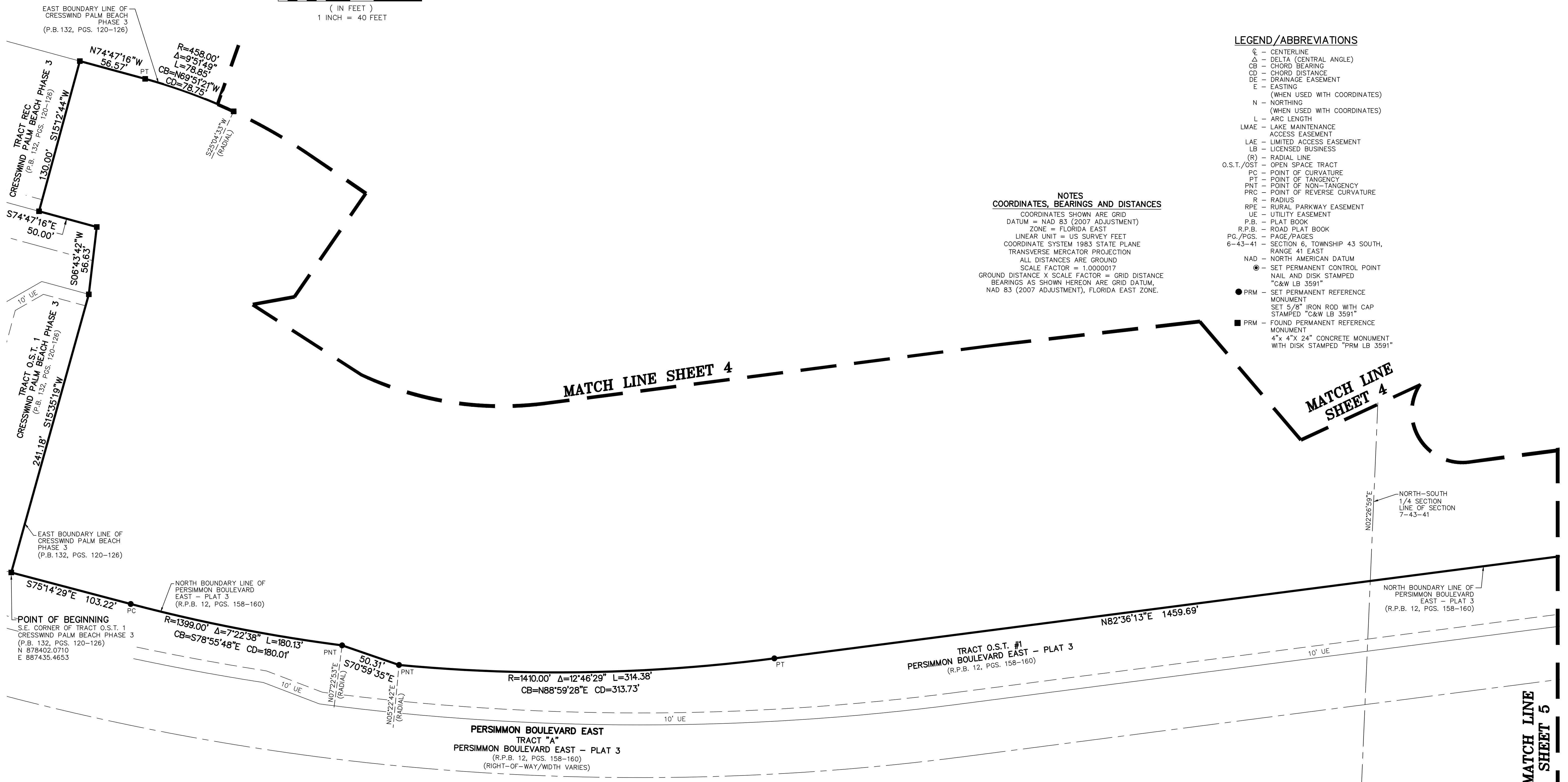
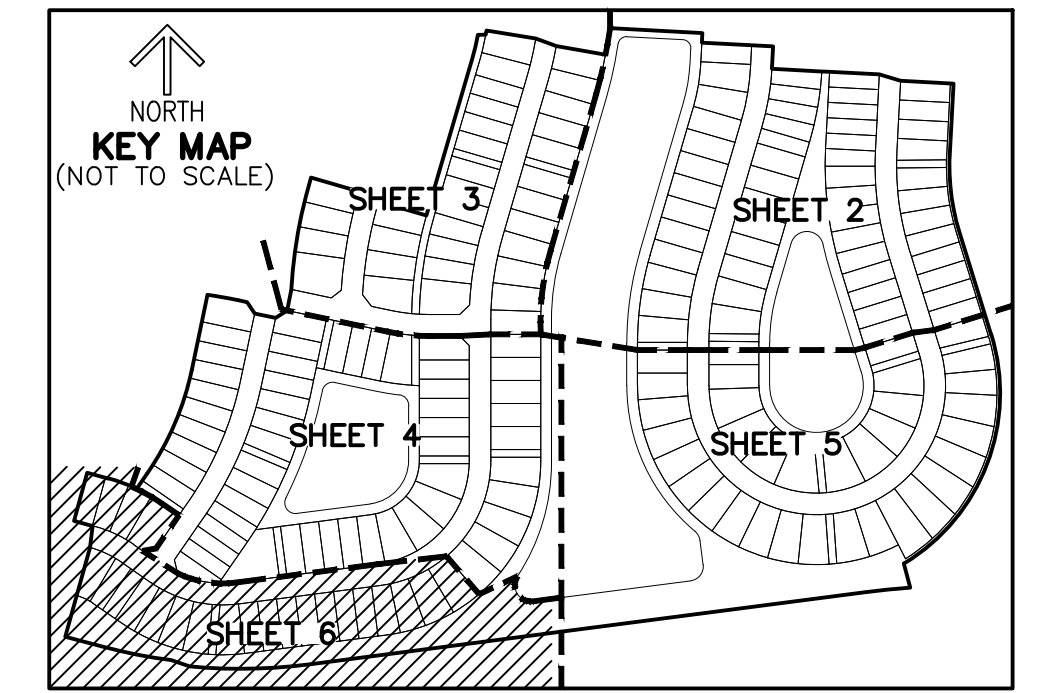
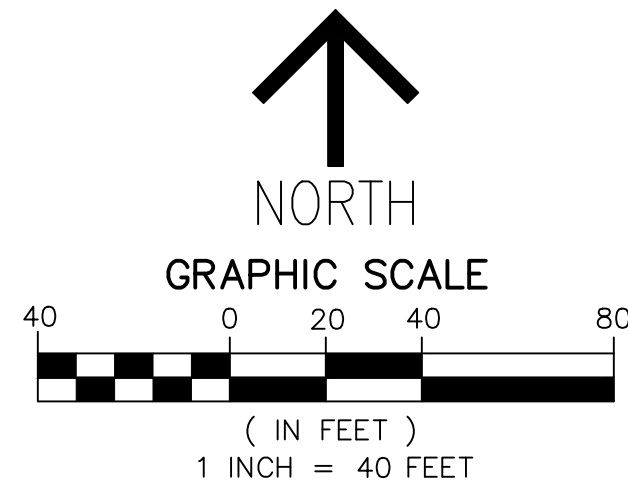
CAULFIELD & WHEELER, INC.

BOUNDARY SURVEY AND 7
A PORTION OF SECTIONS 6 AND 7
TOWNSHIP 43 SOUTH, RANGE 41 EAST
CITY OF WESTLAKE
PALM BEACH COUNTY, FLORIDA

DATE 10/15/2021
DRAWN BY AS
F.B./ PG. ELEC
SCALE AS SHOWN

JOB # 8272-5
SHT. NO.
5
OF 6 SHEETS

TRACT W-9
CRESSWIND PALM BEACH PHASE 3
(P.B. 132, PGS. 120-126)



NOTES
COORDINATES, BEARINGS AND DISTANCES

COORDINATES SHOWN ARE GRID
DATUM = NAD 83 (2007 ADJUSTMENT)
ZONE = FLORIDA EAST
LINEAR UNIT = US SURVEY FEET
COORDINATE SYSTEM 1983 STATE PLANE
TRANSVERSE MERCATOR PROJECTION
ALL DISTANCES ARE GROUND
SCALE FACTOR = 1.0000017
GROUND DISTANCE X SCALE FACTOR = GRID DISTANCE
BEARINGS AS SHOWN HEREON ARE GRID DATUM,
NAD 83 (2007 ADJUSTMENT), FLORIDA EAST ZONE.

LEGEND/ABBREVIATIONS

- CL - CENTERLINE
- Δ - DELTA (CENTRAL ANGLE)
- CB - CHORD BEARING
- CD - CHORD DISTANCE
- DE - DRAINAGE EASEMENT
- E - EASTING
- (WHEN USED WITH COORDINATES)
- N - NORTHING
- (WHEN USED WITH COORDINATES)
- L - ARC LENGTH
- LMAE - LAKE MAINTENANCE ACCESS EASEMENT
- LAE - LIMITED ACCESS EASEMENT
- LB - LICENSED BUSINESS
- (R) - RADIAL LINE
- O.S.T./OST - OPEN SPACE TRACT
- PC - POINT OF CURVATURE
- PT - POINT OF TANGENCY
- PNT - POINT OF NON-TANGENCY
- PRC - POINT OF REVERSE CURVATURE
- R - RADIUS
- RPE - RURAL PARKWAY EASEMENT
- UE - UTILITY EASEMENT
- P.B. - PLAT BOOK
- R.P.B. - ROAD PLAT BOOK
- PG./PGS. - PAGE/PAGES
- 6-43-41 - SECTION 6, TOWNSHIP 43 SOUTH, RANGE 41 EAST
- NAD - NORTH AMERICAN DATUM
- - SET PERMANENT CONTROL POINT NAIL AND DISK STAMPED "C&W LB 3591"
- - SET PERMANENT REFERENCE MONUMENT SET 5/8" IRON ROD WITH CAP STAMPED "C&W LB 3591"
- - FOUND PERMANENT REFERENCE MONUMENT 4" x 4" x 24" CONCRETE MONUMENT WITH DISK STAMPED "PRM LB 3591"

REVISIONS	DATE	BY

CAULFIELD & WHEELER, INC.

BOUNDARY SURVEY
A PORTION OF SECTIONS 6 AND 7
TOWNSHIP 43 SOUTH, RANGE 41 EAST
CITY OF WESTLAKE
PALM BEACH COUNTY, FLORIDA

DATE 10/15/2021
DRAWN BY AS
F.B./ PG. ELEC
SCALE AS SHOWN

JOB # 8272-5
SHT.NO.
6
OF 6 SHEETS